

WAAS	Rwy Idg	3900
CH 50529	TDZE	2247
W30A	Apt Elev	2264

APP CRS  
302°

RNAV (GPS) RWY 30

SHER-WOOD (PWD)

RNP APCH-GPS.

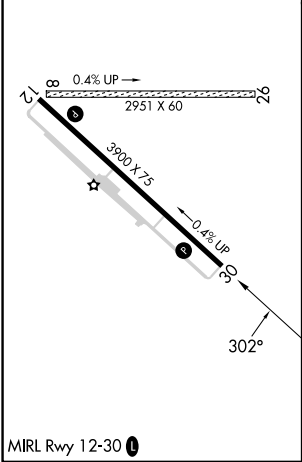
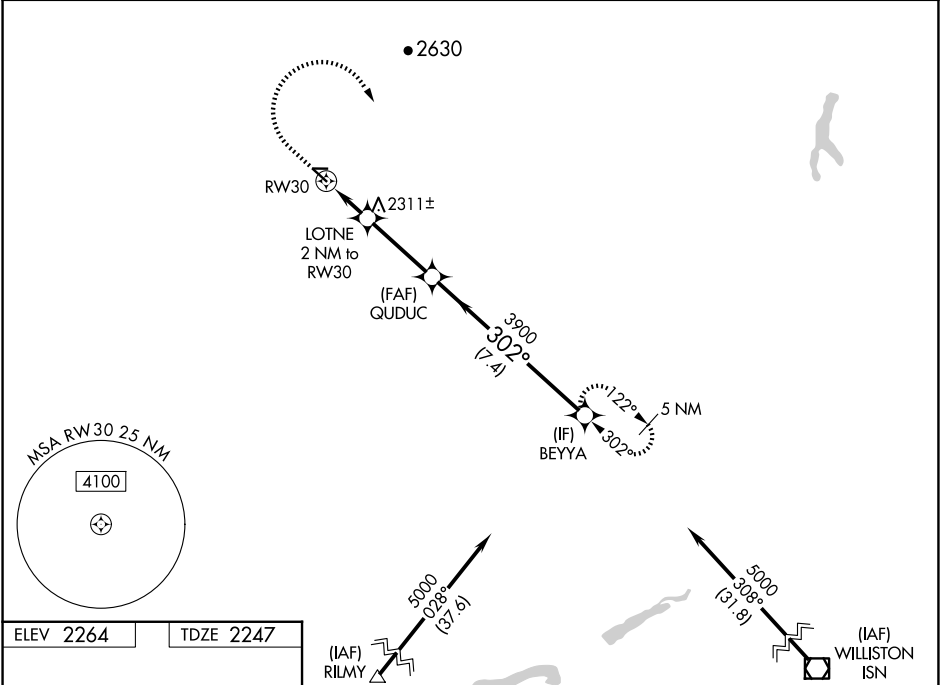
**⚠** Circling Rwy 8, 26 NA at night. For uncompensated Baro-VNAV systems, LNAV/VNAV NA below -19°C or above 54°C. When local altimeter setting not received, use Williston altimeter setting.

MISSED APPROACH: Climb to 2900 then climbing right turn to 5000 direct BEYYA and hold.

AWOS-3PT  
135.025

SALT LAKE CENTER  
126.85 305.2

UNICOM  
122.8 (CTAF) **0**



2900		5000	BEYYA	VGSI and RNAV glidepath not coincident (VGSI Angle 3.00/TCH 28).		BEYYA
↑		↶	✧	LOTNE 2 NM to RW30		QUDUC
				1.3 NM to RW30		3900
				RW30		302°
				2900		5000
				GP 3.00°		TCH 34
				1.3 NM		0.7 NM
				3.1 NM		7.4 NM
CATEGORY	A	B	C	D		
LPV DA	2562-3⁄4		315 (300-3⁄4)			
LNAV/VNAV DA	2612-1		365 (400-1)			
LNAV MDA	2680-1	433 (500-1)	2680-1¼	433 (500-1¼)		
<b>C</b> CIRCLING	2780-1	516 (600-1)	2880-1¾ 616 (700-1¾)	3100-2¾ 836 (900-2¾)		

NW-1, 07 AUG 2025 to 04 SEP 2025

NW-1, 07 AUG 2025 to 04 SEP 2025