

WAAS CH 53312 W02A	APP CRS 023°	Rwy Ldg TDZE 1168 Apt Elev 1178
--	------------------------	---

RNAV (GPS) RWY 2

WILLIAMSBURG-WHITLEY COUNTY (BYL)

⚠

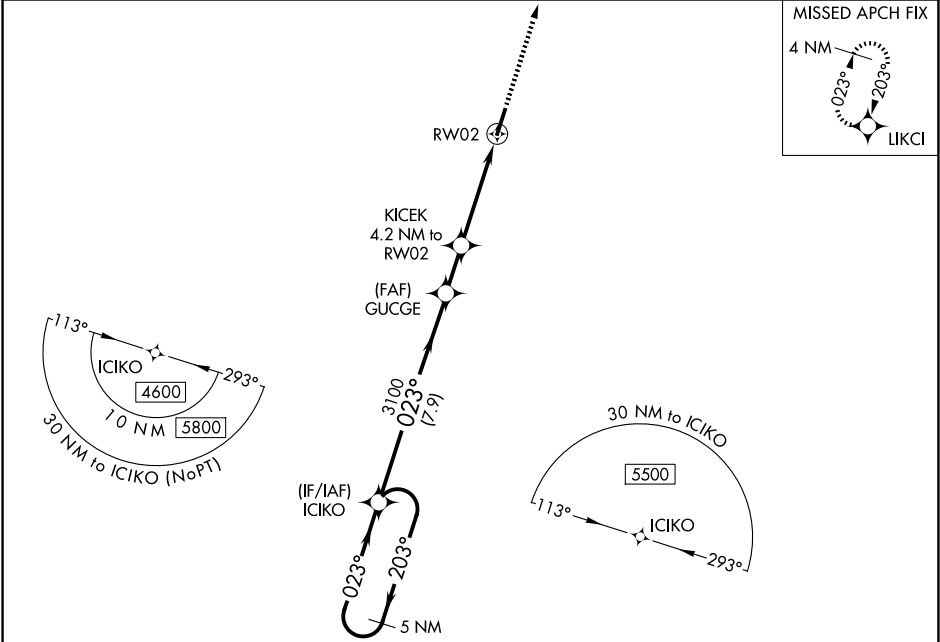
NA

⚙ -16°C

When local altimeter setting not received, use London altimeter setting and increase DA 48 feet, MDA 60 feet and LPV all Cats visibility 1/8 mile. DME/DME RNP-0.3 NA.
Visibility reduction by helicopters NA. VDP NA with London altimeter setting.

MISSED APPROACH:
Climb to 4000 direct
LIKCI and hold.

AWOS-3 119.575	INDIANAPOLIS CENTER 124.625 371.925	UNICOM 122.7 (CTAF) 0
--------------------------	---	---------------------------------



ELEV 1178 TDZE 1168

5 NM Holding Pattern

ICIKO

4600

203°

023°

GP 3.00° TCH 35

GUCGE

3100

2520

7.9 NM

KICEK

4.2 NM to RWY 2

3.3 NM to RWY 2

0.9 NM

0.48 NM

RWY 2

3057

4000

LIKCI

* LNAV only.

CATEGORY	A	B	C	D
LPV DA	1418 7/8 250 (300-7/8)			
LNAV MDA	2300-1 1/4 1132 (1200-1 1/4)	2300-1 1/2 1132 (1200-1 1/2)	2300-3	1132 (1200-3)
CIRCLING	2300-1 1/4 1122 (1200-1 1/4)	2300-1 1/2 1122 (1200-1 1/2)	2300-3	1122 (1200-3)

0.48 NM

UP

2

023°

5499 X 100

20

MIRL Rwy 2-20 0

REIL Rws 2 and 20 0

SE-1, 07 AUG 2025 to 04 SEP 2025

SE-1, 07 AUG 2025 to 04 SEP 2025

WILLIAMSBURG, KENTUCKY
Amdt 2A 29MAY14

36°48'N-84°12'W

WILLIAMSBURG-WHITLEY COUNTY (BYL)

RNAV (GPS) RWY 2