

LOC/DME I-BYL	APP CRS	Rwy Ldg	5499
108.3	200°	TDZE	1178
Chan 20		Apt Elev	1178

LOC RWY 20

WILLIAMSBURG-WHITLEY COUNTY (BYL)

DME required.

▼

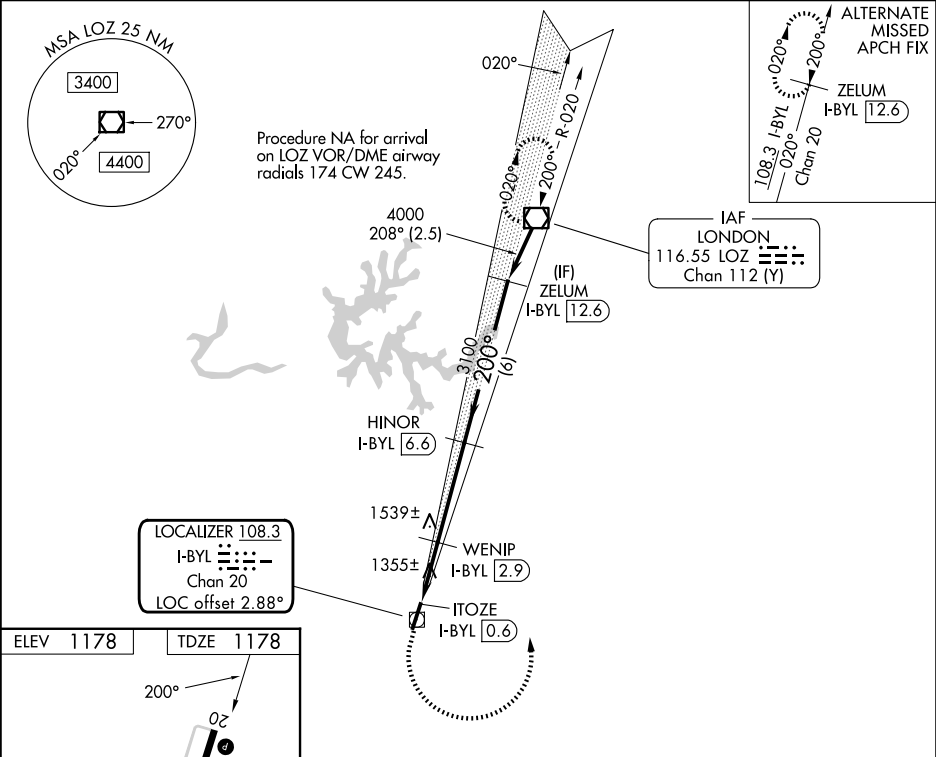
▲

⚠

Rwy 20 helicopter visibility reduction below  $\frac{3}{4}$  SM NA. VDP NA when using London altimeter setting. When local altimeter setting not received, use London altimeter setting and increase all MDAs 60 feet and S-20 Cats C/D visibility  $\frac{1}{2}$  SM.

MISSED APPROACH: Climb to 1800 then climbing left turn to 4000 direct LOZ VOR/DME and hold.

AWOS-3 119.575	INDIANAPOLIS CENTER 124.625 371.925	UNICOM 122.7 (CTAF) 0
-------------------	--	--------------------------



ELEV 1178	TDZE 1178	1800 4000 LOZ VGS1 and descent angles not coincident (VGS1 Angle 3.17/TCH 30).			
MIRL Rwy 2-20 0		ZELUM I-BYL 12.6			
REIL Rwy 2 and 20 0		HINOR I-BYL 6.6			
		WENIP I-BYL 2.9			
		ITOZE I-BYL 0.6			
		1940 2.95° TCH 45			
		1 NM 1.3 NM 3.7 NM 6 NM			
CATEGORY		A		B	
S-20		1740-1 562 (600-1)		1740-1 $\frac{5}{8}$ 562 (600-1 $\frac{5}{8}$ )	
CIRCLING		1760-1 582 (600-1)		2240-3 1062 (1100-3)	
		1860-1 682 (700-1)		2260-3 1082 (1100-3)	

SE-1, 07 AUG 2025 to 04 SEP 2025

SE-1, 07 AUG 2025 to 04 SEP 2025