

WAAS CH <b>93902</b> <b>W13A</b>	APP CRS <b>126°</b>	Rwy Idg TDZE <b>1124</b> Apt Elev <b>1126</b>
--	------------------------	---

RNAV (GPS) RWY 13

WILLMAR MUNI/JOHN L RICE FLD (BDH)

RNP APCH - GPS.

⚠

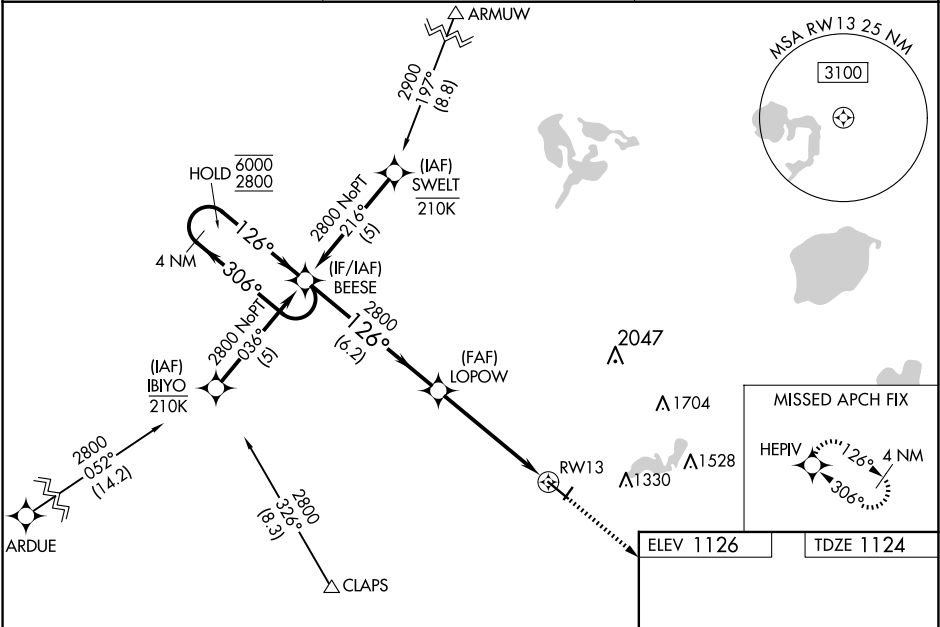
For uncompensated Baro-VNAV systems, LNAV/VNAV NA below -17°C or above 54°C. Circling NA to Rwy's 3 and 21. Inop table does not apply to LPV. For inop ALS, increase LNAV/VNAV all Cats visibility to 1½ SM, LNAV Cats A and B to 1 SM and LNAV Cats C and D visibility to 1¾ SM. When local altimeter setting not received, use Olivia altimeter setting: increase LPV DA to 1379 feet; increase LNAV/VNAV DA to 1584 feet and all visibilities ½ SM; increase all MDAs 60 feet and Circling visibility Cat D ¼ SM. Baro-VNAV and VDP NA when using Olivia Rgnl altimeter setting.

MALSR

MISSED APPROACH:

Climb to 2800 direct HEPV and hold.

AWOS-3PT <b>118.75</b>	MINNEAPOLIS CENTER <b>125.5 323.1</b>	UNICOM <b>122.8 (CTAF)</b>
---------------------------	--	-------------------------------



4 NM Holding Pattern		BEESE	LOPOW	2800	HEPV
6000 2800		126°	126°	2800	126°
GP 3.00° TCH 49		6.2 NM	3.8 NM	1.3 NM	
CATEGORY	A	B	C	D	
LPV DA	1324-¾ 200 (200-¾)				
LNAV/VNAV DA	1529-¾ 405 (500-¾)				
LNAV MDA	1600-¾	476 (500-¾)	1600-1	476 (500-1)	
CIRCLING	1600-1	474 (500-1)	1660-1½ 534 (600-1½)	1960-2¾ 834 (900-2¾)	
					HIRL Rwy 13-31 REIL Rwy 31