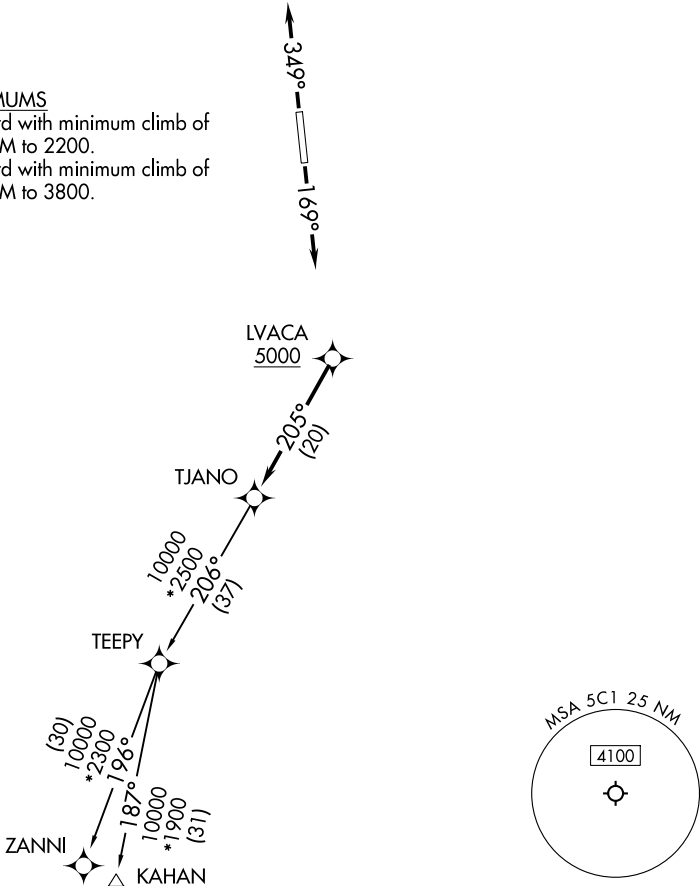


| | | |
|------------------------------------|--|----------------------------------|
| SAN ANTONIO DEP CON 125.1 307.0 | RNAV 1 - DME/DME IRU or GPS. RADAR required for non-GPS equipped aircraft. RADAR required. | TOP ALTITUDE: ASSIGNED BY ATC |
|------------------------------------|--|----------------------------------|

TAKEOFF MINIMUMS

Rwy 17: Standard with minimum climb of 210' /NM to 2200.
Rwy 35: Standard with minimum climb of 250' /NM to 3800.



DEPARTURE ROUTE DESCRIPTION

TAKEOFF RUNWAY 17: Climb on heading 169° or as assigned by ATC, for vectors to LVACA, thence. . .
TAKEOFF RUNWAY 35: Climb on heading 349° or as assigned by ATC, for vectors to LVACA, thence. . .

. . .on track 205° to TJANO, then on transition. Maintain ATC assigned altitude. Expect filed altitude 10 minutes after departure.

KAHAN TRANSITION (TJANO2.KAHAN)
ZANNI TRANSITION (TJANO2.ZANNI)