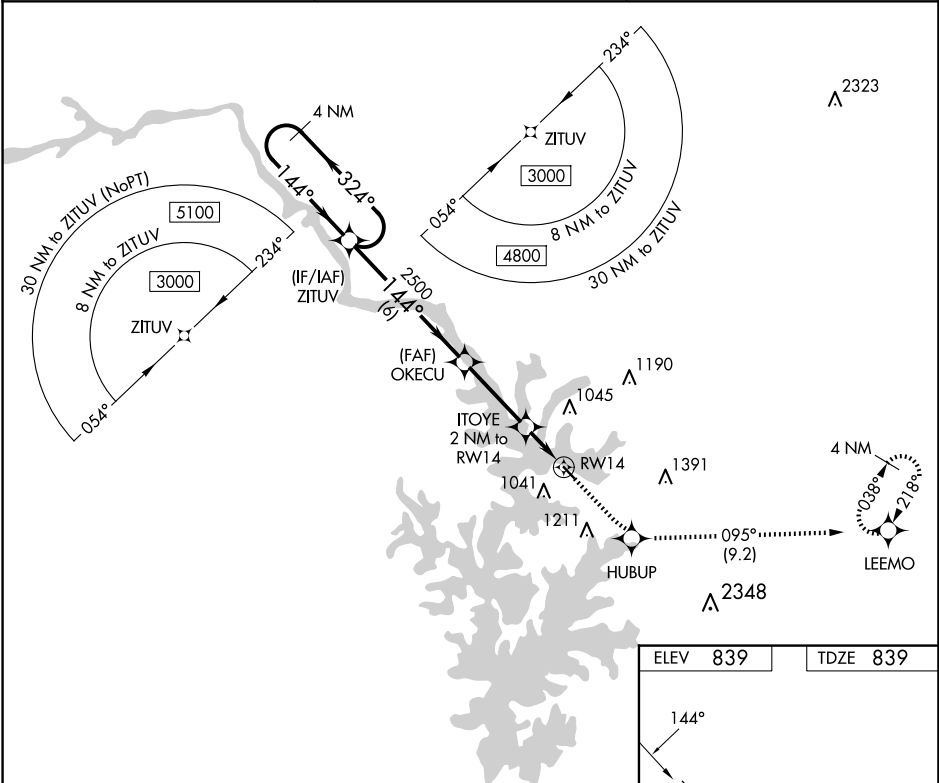


APP CRS	Rwy Idg	2962
144°	TDZE	839
	Apt Elev	839

RNAV (GPS) RWY 14
LAKE NORMAN AIRPARK (14A)

<p>Procedure NA at night. DME/DME RNP-0.3 NA. Use Statesville altimeter setting; when not received, use Charlotte altimeter setting and increase all MDA 40 feet. Rwy 14, 32 helicopter visibility reduction below 1 SM NA.</p>	<p>MISSED APPROACH: Climb to 4000 direct HUBUP and on track 095° to LEEMO and hold, continue climb-in-hold to 4000.</p>
---	---

SVH AWOS-3 119.225	CHARLOTTE APP CON 134.75 257.2	UNICOM 122.8 (CTAF) 0
-----------------------	-----------------------------------	--------------------------



Visual Segment - Obstacles.			
4 NM Holding Pattern			
ZITUV			
3000 ← 324° 144° →			
OKECU			
2500			
ITOYE 2 NM to RW14			
RW14			
1480			
6 NM 3.2 NM 2 NM			
CATEGORY	A	B	C
LNAV MDA	1360-1	521 (600-1)	NA
CIRCLING	1440-1 601 (700-1)	1500-1 661 (700-1)	NA

