

APP CRS	Rwy Ldg	4020
088°	TDZE	142
	Apt Elev	142

RNAV (GPS) RWY 9

KOBUK (OBU) (PAOB)

RNP APCH - GPS.

NA

-37°C

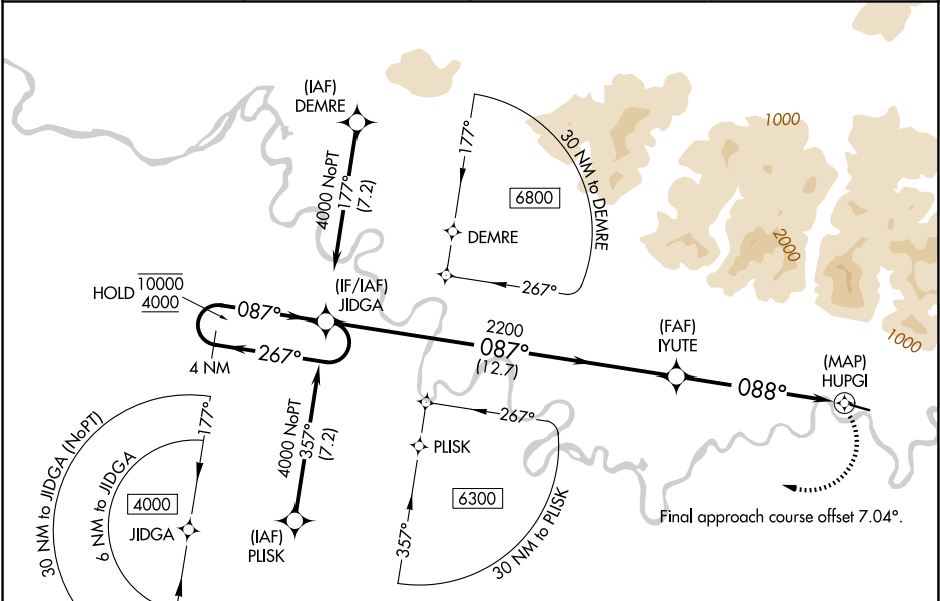
▼

NA

Circling Rwy 27 NA at night. Use SHG/PAGH altimeter setting; when not received, use AFM/PAFM altimeter setting and increase all MDAs 60 feet and LNAV visibility Cats C and D ½ SM, and Circling visibility Cat C ½ SM. Circling NA north of Rwy 9-27.

MISSED APPROACH: Climbing right turn to 4000 direct JIDGA and hold.

SHG/PAGH AWOS-3P 118.525	ANCHORAGE CENTER 119.2 263.0	KOTZEBUE RADIO 122.0	CTAF 122.7
-----------------------------	---------------------------------	-------------------------	---------------



ELEV 142

TDZE 142

This diagram provides a detailed view of the final approach. It shows the descent from 4000 feet at JIDGA, through IYUTE at 2200 feet, and finally to HUPGI. The final approach is a 0.3 NM segment at 4020 X 75 feet. The chart also includes a table of categories and altitudes for the approach.

CATEGORY	A	B	C	D
LNAV MDA	720-1	578 (600-1)	720-1½	578 (600-1½)
CIRCLING	720-1	578 (600-1)	720-1½	740-2

MIRL Rwy 9-27