

APP CRS	Rwy Idg	3200
003°	TDZE	80
	Apt Elev	80

RNAV (GPS) RWY 36

CLARKS POINT (CLP) (PFCL)

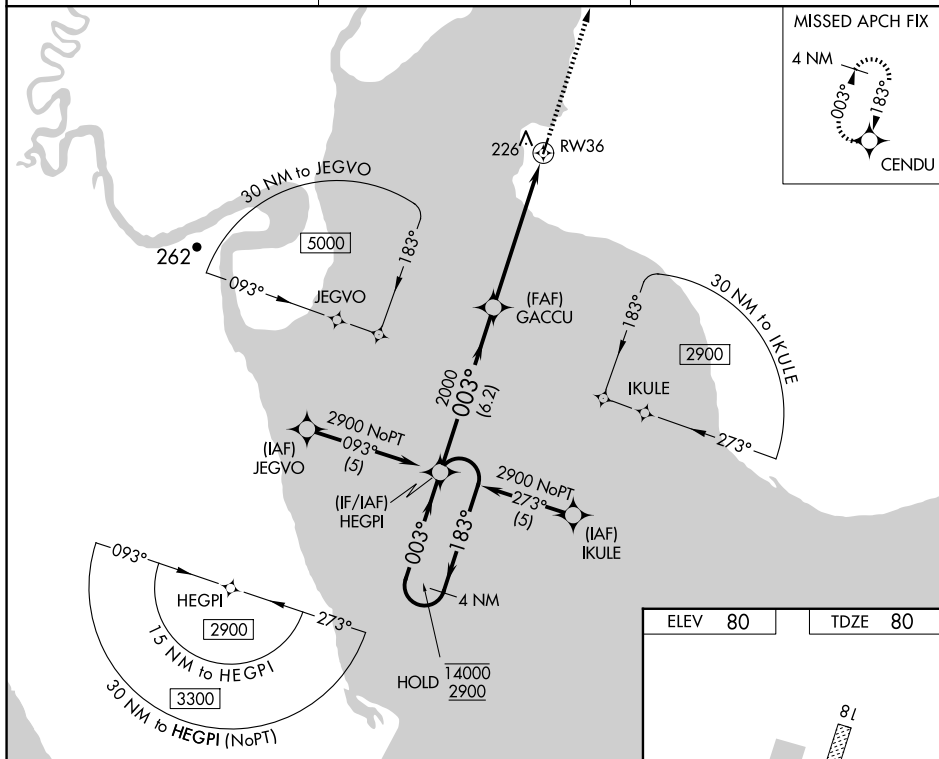
RNP APCH-GPS.

T Rwy 36 helicopter visibility reduction below 1 SM NA. Rwy 36 Straight-in and Circling
A minimums NA at night. When local altimeter setting not received, use Dillingham
altimeter setting and increase all MDAs 40 feet and LNAV visibility Cat C/D $\frac{1}{8}$ SM.

MISSED APPROACH: Climb to 2900 direct CENDU and hold.

AWOS-3P
121.45

ANCHORAGE CENTER
132.75 282.35

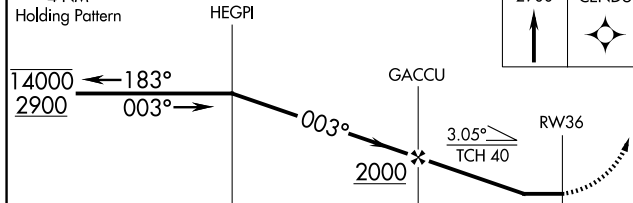
CTAF
122.90

4 NM
Holding Pattern

HEGPI

290

CENDU



			6.2 NM	5.8 NM	
CATEGORY	A	B	C	D	
LNAV MDA	660-1	580 (600-1)	660-1 $\frac{5}{8}$	580 (600-1 $\frac{5}{8}$)	
CIRCLING	660-1 580 (600-1)	700-1 620 (700-1)	700-1 $\frac{3}{4}$ 620 (700-1 $\frac{3}{4}$)	700-2 620 (700-2)	

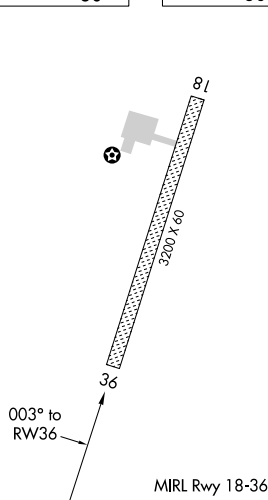
CLARKS POINT, ALASKA
Orig-C 19MAY22

58°50'N - 158°32'W

CLARK'S POINT (CLP) (PFCL)
RNAV (GPS) RWY 36

ELEV	80		TDZE	80
------	----	--	------	----

TDZE	80
------	----

MIRL Rwy 18-36 **L**

AK, 07 AUG 2025 to 02 OCT 2025

AK, 07 AUG 2025 to 02 OCT 2025