

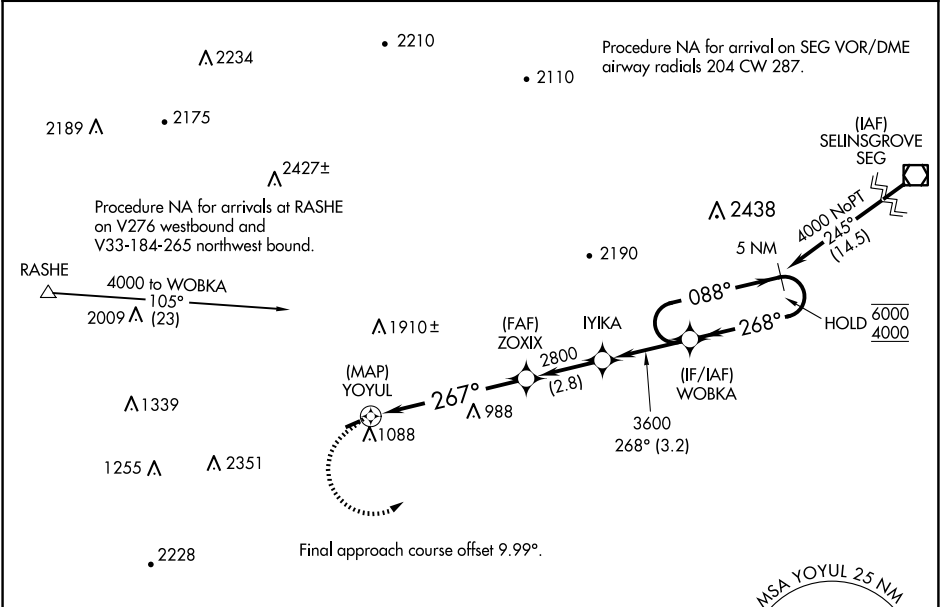
APP CRS	Rwy Idg	2627
267°	TDZE	545
	Apt Elev	545

RNAV (GPS) RWY 26

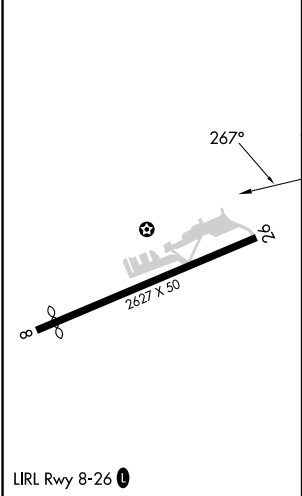
MIFFLINTOWN (P34)

RNP APCH - GPS.	Procedure NA at night. Rwy 26 helicopter visibility reduction below 1 SM NA. Circling NA north of Rwy 8-26. Use Penn Valley altimeter setting; when not received, use Reedsville altimeter setting and increase all MDAs 240 feet and LNAV visibility Cat B ¼ SM.	MISSED APPROACH: Climbing left turn to 4000 direct WOBKA and hold, continue climb-in-hold to 4000.
-----------------	---	--

SEG ASOS 123.975	NEW YORK APP CON 134.8 338.3	UNICOM 122.8 (CTAF) 0
---------------------	---------------------------------	--------------------------



ELEV	545	TDZE	545
------	-----	------	-----



4000 WOBKA			
5 NM Holding Pattern			
WOBKA IYIKA ZOXIX			
(MAP) YOYUL 267° 2800 3600 268° 088° 6000 4000			
0.5 5.7 NM 2.8 NM 3.2 NM			
CATEGORY	A	B	C D
LNAV MDA	1440-1¼	895 (900-1¼)	NA
CIRCLING	1560-1¼ 1015 (1100-1¼)	2080-1½ 1535 (1600-1½)	NA

NE-4, 07 AUG 2025 to 04 SEP 2025

NE-4, 07 AUG 2025 to 04 SEP 2025