

APP CRS
196°

Rwy Ldg
TDZE
Apt Elev

3815
1276
1276

RNAV (GPS) RWY 20

BRAXTON COUNTY (48I)

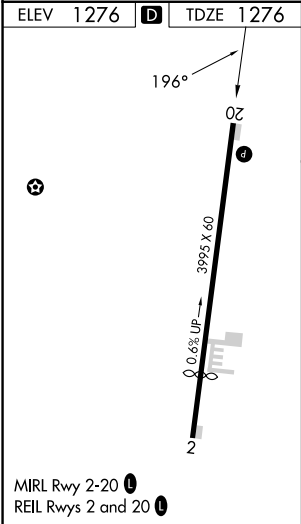
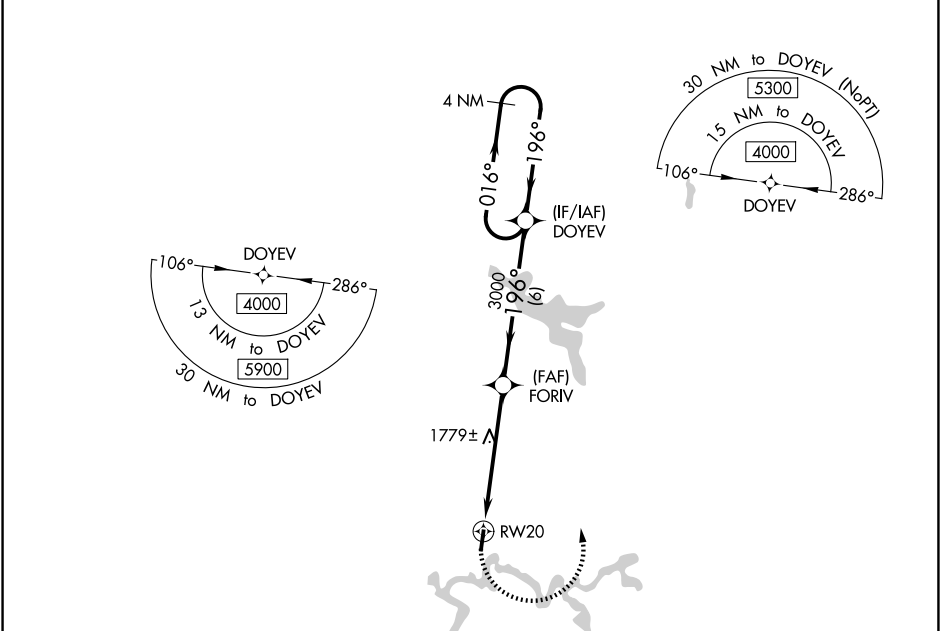
▼

NA

DME/DME RNP-0.3 NA. Procedure NA at night. Helicopter visibility reduction below 1 SM NA. When local altimeter setting not received, use Clarksburg altimeter setting and increase all MDA 260 feet. Increase LNAV Cat A/B visibility ¼ mile, LNAV Cat C visibility ½ mile, and Circling Cat A visibility ¼ mile.

MISSED APPROACH:
Climbing left turn to 4000 direct DOYEV and hold.

AWOS-3PT 118.225	CLARKSBURG APP CON ★ 121.15 284.65	CTAF 122.9 0
---------------------	---------------------------------------	-----------------



4000	DOYEV	VGSI and descent angles not coincident (VGSI Angle 4.00/TCH 40).			DOYEV	4 NM Holding Pattern
		FORIV	≤ 3.00° TCH 40	3000	196°	016° → 4000
		RW20	5.3 NM	6 NM	196°	
CATEGORY	A	B	C	D		
LNAV MDA	2060-1 784 (800-1)	2060-1 ¼ 784 (800-1 ¼)	2060-2 ½ 784 (800-2 ½)	NA		
CIRCLING	2060-1 784 (800-1)	2240-1 ½ 964 (1000-1 ½)	2240-3 964 (1000-3)	NA		

NE-4, 07 AUG 2025 to 04 SEP 2025

NE-4, 07 AUG 2025 to 04 SEP 2025