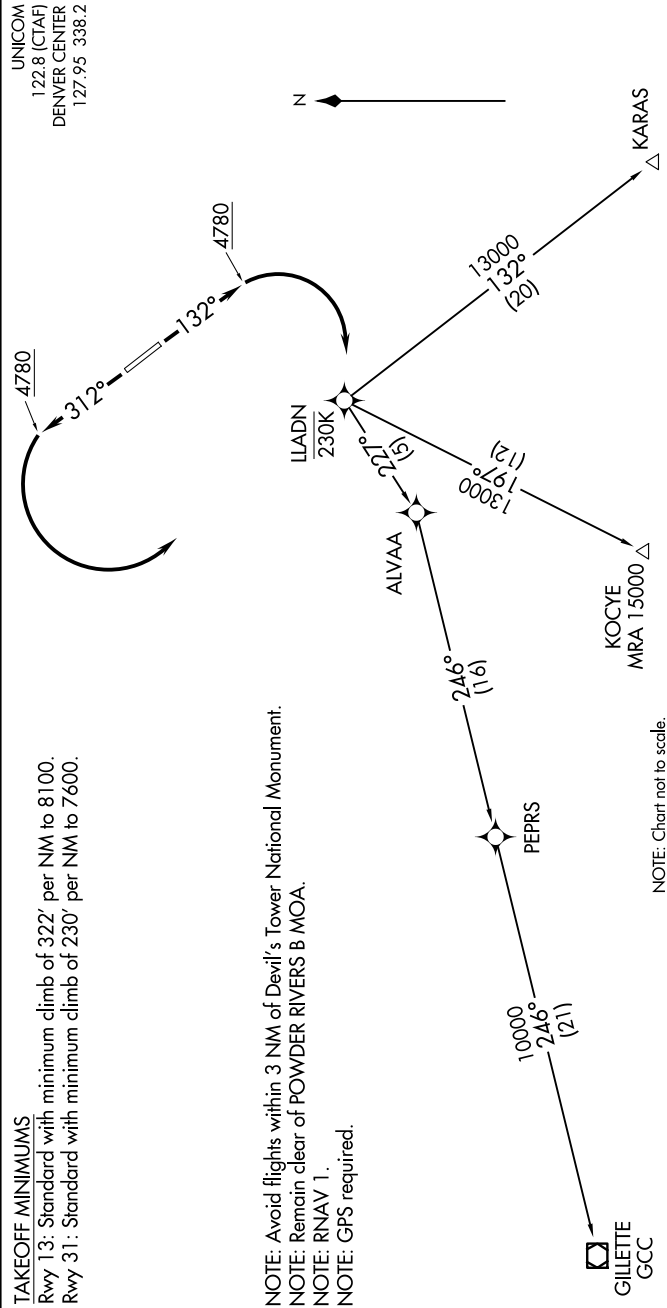


NW-1, 07 AUG 2025 to 04 SEP 2025



DEPARTURE ROUTE DESCRIPTION

TAKEOFF RUNWAY 13: Climb heading 132° to 4780, then right turn direct LLADN, cross LLADN at/below 230K. Thence
TAKEOFF RUNWAY 31: Climb heading 312° to 4780, then left turn direct LLADN, cross LLADN at/below 230K. Thence
. . . . Expect further clearance to filed altitude 10 minutes after departure.

LOST COMMUNICATIONS: Alternate frequency 135.6 / 363.025.

- GILLETTE TRANSITION (LLADN1.GCC)
- KARAS TRANSITION (LLADN1.KARAS)
- KOCYE TRANSITION (LLADN1.KOCYE)

NW-1, 07 AUG 2025 to 04 SEP 2025