

APP CRS	Rwy Ldg	4000
038°	TDZE	1034
	Apt Elev	1036

RNAV (GPS) RWY 4

TOMPKINSVILLE/MONROE COUNTY (T'ZV)

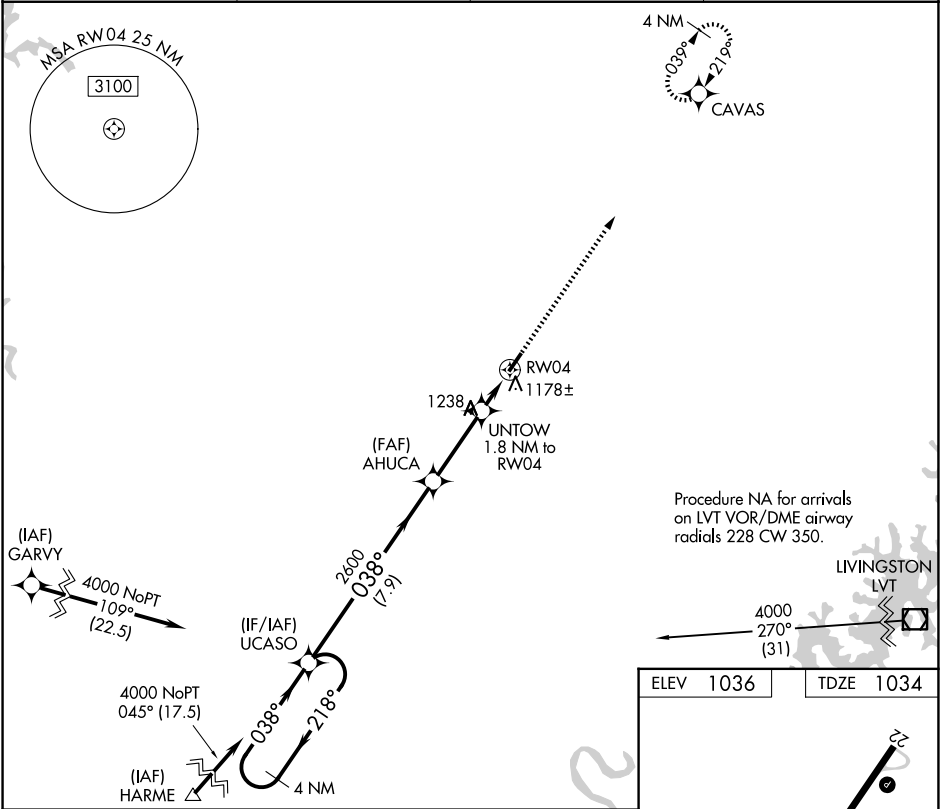
T

NA

DME/DME RNP-0.3 NA.
Helicopter visibility reduction below 1 SM NA.
Night landing: Rwy 4 NA.
Use Glasgow altimeter setting.

MISSED APPROACH: Climb to 4000 direct CAVAS and hold.

AWOS-AV 124.175	GLW AWOS-3 118.525	MEMPHIS CENTER 132.9 290.3	UNICOM 123.05 (CTAF) 0
--------------------	-----------------------	-------------------------------	---------------------------



4 NM Holding Pattern

UCASO

Visual Segment - Obstacles.

4000

CAVAS

4000

218°

038°

038°

2600

1640

7.9 NM

3.1 NM

1.8

UNTOW 1.8 NM to RW04

RW04

CATEGORY	A	B	C	D
LNAV MDA	1540-1	506 (600-1)	1540-1½ 506 (600-1½)	NA
CIRCLING	1640-1 604 (700-1)	1800-1 764 (800-1)	1840-2¼ 804 (900-2¼)	NA

