

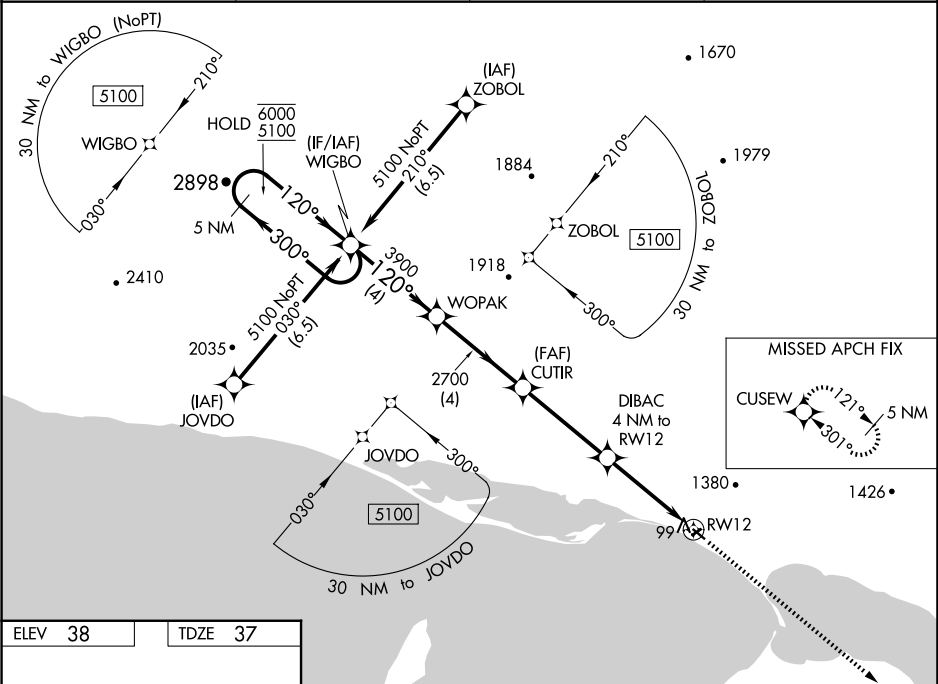
WAAS CH 77628 W12A	APP CRS 120°	Rwy Idg TDZE Apt Elev	2990 37 38
--	------------------------	-----------------------------	---------------------------------------

RNAV (GPS) RWY 12

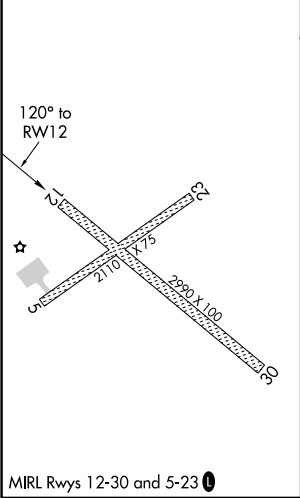
BREVIG MISSION (KTS)(P'FKT)

RNP APCH.	MISSED APPROACH: Climb to 6300 direct CUSEW and hold, continue climb-in-hold to 6300.
<div><div></div><div></div></div> <div>Circling NA north of Rws 12 and 23. Circling Rwy 23 NA at night. For uncompensated Baro-VNAV systems, LNAV/VNAV NA below -25° C or above 54°C.</div>	

AWOS-3P 121.55	ANCHORAGE CENTER 133.3 290.4	NOME RADIO 135.6	CTAF 123.00
--------------------------	--	----------------------------	-----------------------



ELEV 38	TDZE 37
---------	---------



5 NM Holding Pattern		WOPAK	CUTIR	DIBAC 4 NM to RW12	6300 CUSEW
6000 5100		300° 120°	120° 3900	2700	*LNAV only.
GP 3.12° TCH 40		4 NM	4 NM	3.9 NM	*0.9 NM to RW12
CATEGORY		A	B	C	D
LPV DA		287-1	250 (300-1)	NA	
LNAV/VNAV DA		287-1	250 (300-1)	NA	
LNAV MDA		360-1	323 (400-1)	NA	
CIRCLING		620-1 582 (600-1)	1460-1½ 1422 (1500-1½)	NA	