

WAAS
CH **61342**
W26A

APP CRS
261°

Rwy Idg
TDZE **4775**
Apt Elev **4779**

RNAV (GPS) RWY 26

PHIFER AIRFIELD (E.A.N)

RNP APCH.

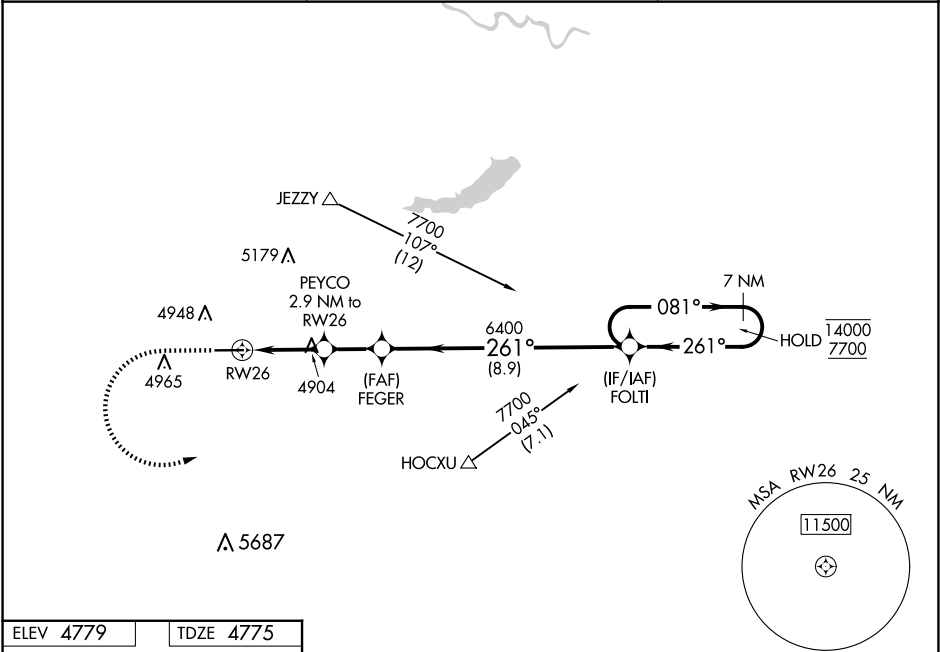
▼

▲

Circling Rwy 8 NA at night. For uncompensated Baro-VNAV systems, LNAV/VNAV NA below -24°C or above 54°C.

MISSED APPROACH: Climb to 5500 then climbing left turn to 7700 direct to FOLTI and hold.

AWOS-3PT 121.125	DENVER CENTER 135.6 363.025	CTAF 122.90
----------------------------	---------------------------------------	-----------------------



ELEV 4779	TDZE 4775
------------------	------------------

5500

7700

FOLTI

*LNAV only.

PEYCO
2.9 NM to
RWY 26

*1.1 NM to
RWY 26

RWY 26

5740*

6400

6400

7700

1.1 NM

1.8 NM

2.1 NM

8.9 NM

7 NM Holding Pattern

081°

261°

14000

7700

GP 3.00°

TCH 42

CATEGORY	A	B	C	D
LPV DA	4975-1	200 (200-1)		NA
LNAV/VNAV DA	5025-1	250 (300-1)		NA
LNAV MDA	5160-1	385 (400-1)	5160-1½ 385 (400-1½)	NA
CIRCLING	5260-1 481 (500-1)	5280-1 501 (600-1)	5300-1½ 521 (600-1½)	NA

REIL Rwy 26

MIRL Rwy 8-26