

APP CRS  
176°

Rwy Ldg  
TDZE  
Apt Elev

3401  
595  
599

RNAV (GPS) RWY 18

HEFNER-EASLEY (H68)

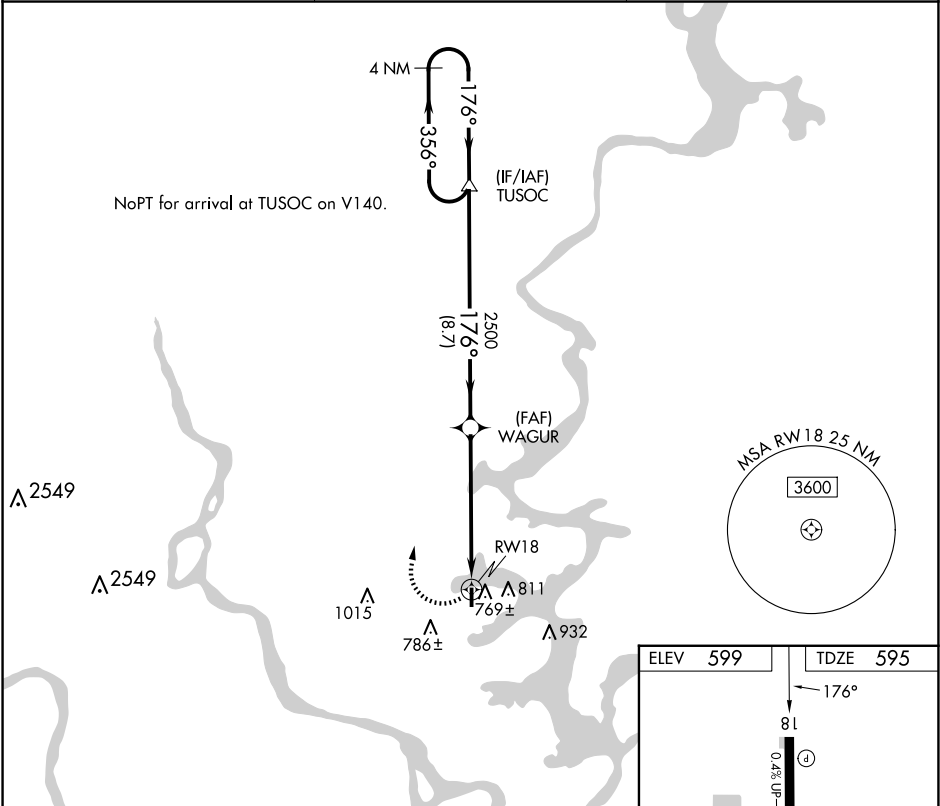
RNP APCH - GPS.

Procedure NA at night. Use Pryor altimeter setting.

Rwy 18 helicopter visibility reduction below 1 SM NA.

MISSED APPROACH: Climbing right turn to 2500 direct TUSOC and hold.

|                       |                                |               |
|-----------------------|--------------------------------|---------------|
| H71 AWOS-3PT<br>120.1 | TULSA APP CON<br>119.1 360.825 | CTAF<br>122.9 |
|-----------------------|--------------------------------|---------------|



4 NM Holding Pattern

TUSOC

WAGUR

2500

TUSOC

2500

176°

356°

176°

3.05°

TCH 37

8.7 NM

5.8 NM

RW18

| CATEGORY | A      | B           | C  | D |
|----------|--------|-------------|----|---|
| RNAV MDA | 1080-1 | 485 (500-1) | NA |   |
| CIRCLING | 1160-1 | 561 (600-1) | NA |   |

