

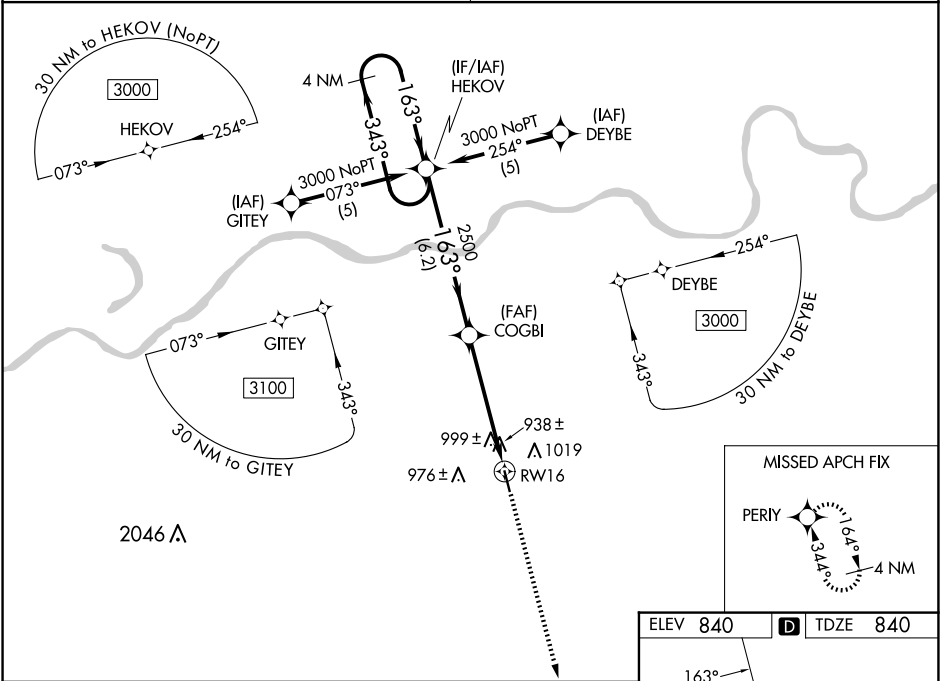
WAAS CH 86601 W16A	APP CRS 163°	Rwy Idg TDZE Apt Elev	4400 840 840
----------------------------------------	------------------------	-----------------------------	-----------------------------------------

RNAV (GPS) RWY 16

HIGGINSVILLE INDUSTRIAL MUNI (HIG)

RNP APCH - GPS.	
<div><div>▼</div><div>NA</div></div> Baro-VNAV NA. Use Whiteman Air Force Base altimeter setting; when not received, use Kansas City/Lee's Summit Rgnl altimeter setting; increase LPV DA to 1293 feet and all visibilities ¼ SM; increase LNAV/VNAV DA to 1410 feet; increase all MDAs 60 feet, LNAV visibility Cat C ¼ SM and Circling visibility Cats C and D ¼ SM.	MISSED APPROACH: Climb to 3000 direct PERIY and hold.

WHITEMAN APP CON ★ 127.45 284.0	UNICOM 122.8 (CTAF) 0
-------------------------------------------	---------------------------------



4 NM Holding Pattern		HEKOV	3000	PERIY
GP 3.00° TCH 31		COGBI	2500	RW16
6.2 NM		5 NM		
CATEGORY	A	B	C	D
LPV DA	1247-1½ 407 (500-1½)			
LNAV/VNAV DA	1364-2 524 (600-2)			
LNAV MDA	1360-1 520 (600-1)	1360-1½ 520 (600-1½)	1360-1¾ 520 (600-1¾)	
CIRCLING	1440-1 600 (600-1)	1440-1½ 600 (600-1½)	1460-2 620 (700-2)	

