

WAAS CH 42825 W10A	APP CRS 096°	Rwy Idg TDZE 7 Apt Elev 7	3000
--	------------------------	---	-------------

RNAV (GPS) RWY 10

MIAMI HOMESTEAD GENERAL AVIATION (X51)

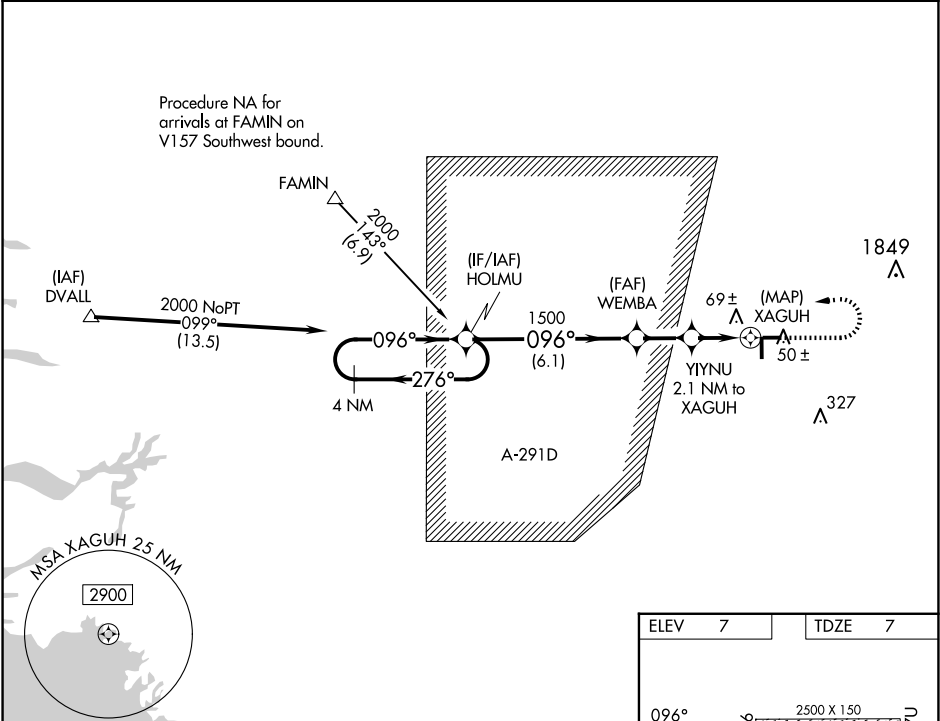
▼

NA

Baro-VNAV NA when using Miami Exec altimeter setting. For uncompensated Baro-VNAV systems, LNAV/VNAV NA below -15°C (5°F) or above 54°C (130°F). DME/DME RNP-0.3 NA. When local altimeter setting not received, use Miami Exec altimeter setting: increase LPV DA to 284; increase LNAV/VNAV DA to 284; increase all MDA 40 feet.

MISSED APPROACH: Climb to 500 then climbing left turn to 2000 direct HOLMU and hold.

AWOS-3 118.375	MIAMI APP CON 125.5 354.1	UNICOM 122.8 (CTAF)
--------------------------	-------------------------------------	-------------------------------



4 NM Holding Pattern

VGSI and descent angles not coincident. (VGSI Angle 3.00/TCH 71).

HOLMU

500

2000

HOLMU

2000

276°

096°

096°

1500

1500

860

WEMB A

Y1YNU 2.1 NM to XAGUH

XAGUH

GP 3.00° TCH 40

6.1 NM

2 NM

2.1 NM

0.5

CATEGORY	A	B	C	D
LPV DA	257-7/8	250 (300-7/8)	NA	
LNAV/VNAV DA	257-7/8	250 (300-7/8)	NA	
LNAV MDA	320-1	313 (400-1)	NA	
CIRCLING	380-1 373 (400-1)	460-1 453 (500-1)	NA	

ELEV 7	TDZE 7
--------	--------

096°

2500 X 150

27U

3000 X 75

28

81

10

4001 X 100

36

MRL Rwy 18-36 and 10-28

SE-3, 07 AUG 2025 to 04 SEP 2025

SE-3, 07 AUG 2025 to 04 SEP 2025