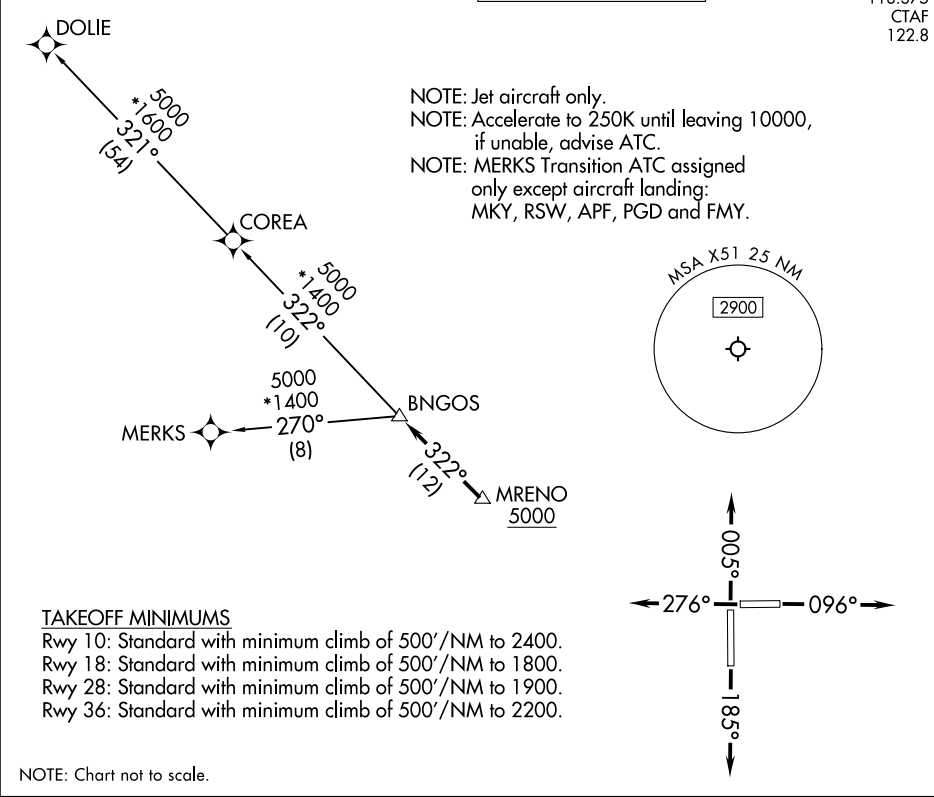


RNAV-1 DME/DME/IRU or GPS.	TOP ALTITUDE: ASSIGNED BY ATC	MIAMI DEP CON 125.5 354.1 AWOS-3 118.375 CTAF 122.8
RADAR required.		



DEPARTURE ROUTE DESCRIPTION

TAKEOFF RUNWAY 10: Climb on heading 096° or as assigned by ATC for RADAR vectors to cross MRENO at or above 5000, thence. . .

TAKEOFF RUNWAY 18: Climb on heading 185° or as assigned by ATC for RADAR vectors to cross MRENO at or above 5000, thence. . .

TAKEOFF RUNWAY 28: Climb on heading 276° or as assigned by ATC for RADAR vectors to cross MRENO at or above 5000, thence. . .

TAKEOFF RUNWAY 36: Climb on heading 005° or as assigned by ATC for RADAR vectors to cross MRENO at or above 5000, thence. . .

. . .on track 322° to BNGOS, then on assigned transition, maintain ATC assigned altitude, expect filed altitude within 10 minutes after departure.

COREA TRANSITION (BNGOS4.COREA)

DOLIE TRANSITION (BNGOS4.DOLIE)

MERKS TRANSITION (BNGOS4.MERKS)