

WAAS CH 93715 W36A	APP CRS 001°	Rwy Idg 5002 TDZE 835 Apt Elev 845
--	------------------------	---

RNAV (GPS) RWY 36

NORTH CENTRAL MISSOURI RGNL (MO8)

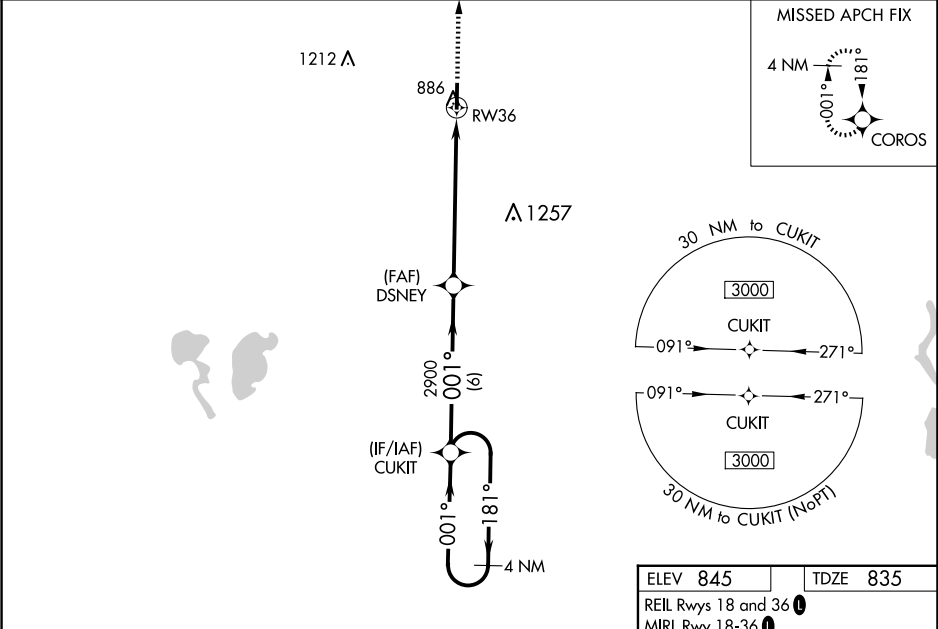
RNP APCH.

NA

For uncompensated Baro-VNAV systems, LNAV/VNAV NA below -16°C or above 54°C. Baro-VNAV and VDP NA when using Kirksville altimeter setting. When local altimeter setting not received, use Kirksville altimeter setting and increase all LPV and LNAV/VNAV DA to 1169 feet and increase all visibility ½ mile; increase all MDA 100 feet, increase LNAV Cat C/D visibility ¼ mile, and Circling Cat C visibility ½ mile. Rwy 36 helicopter visibility reduction below ¾ SM NA.

MISSED APPROACH:
Climb to 3000 direct
COROS and hold.

AWOS-2 118.425	KANSAS CITY CENTER 125.25 235.975	CTAF 122.9 0
--------------------------	---	------------------------



4 NM Holding Pattern		CUKIT	DSNEY	RW36	3000	COROS
3000		181°	001°	001°	2900	
GP 3.00°		TCH 40				
6 NM		5 NM	1.4 NM			
CATEGORY	A	B	C	D		
LPV DA		1085-1	250 (300-1)			
LNAV/ VNAV DA		1085-1	250 (300-1)			
LNAV MDA	1300-1	465 (500-1)	1300-1 3/8	465 (500-1 3/8)		
CIRCLING	1300-1	455 (500-1)	1300-1 1/2	1400-2		
			455 (500-1 1/2)	555 (600-2)		

