

APP CRS
228°

Rwy Idg
TDZE
Apt Elev

4300
2864
2869

RNAV (GPS) RWY 23

FORT BENTON (79S)

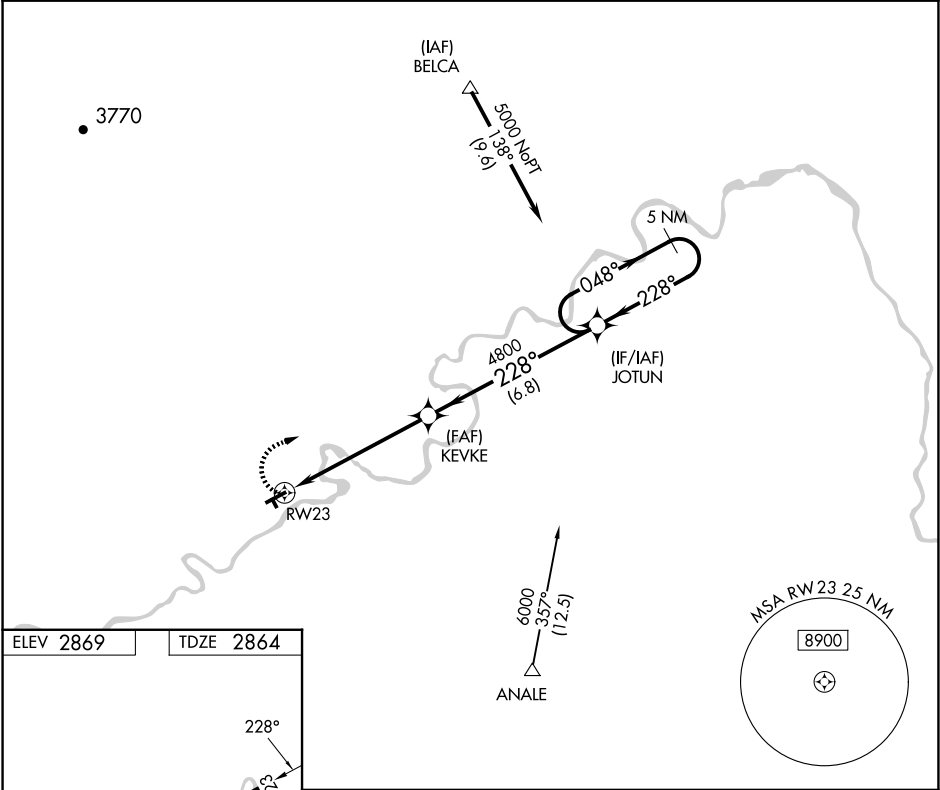
▼

▲

DME/DME RNP-0.3 NA. Procedure NA at night. When local altimeter setting not received, use Great Falls altimeter setting and increase all MDAs 200 feet and LNAV visibility Cat C ½ SM, and Circling visibility Cat C ¾ SM. Circling NA to Rwy 14-32.

MISSED APPROACH: Climbing right turn to 5000 direct JOTUN and hold.

AWOS-3PT 121.125	SALT LAKE CENTER 133.4 285.4	UNICOM 122.8 (CTAF) 0
---------------------	---------------------------------	--------------------------



ELEV 2869

TDZE 2864

228°

4300 X 75

1700 X 75

52

5000

JOTUN

1.4 NM to RWY 23

3.05° TCH 40

4800

228°

048°

5000

5 NM Holding Pattern

CATEGORY	A	B	C	D
LNAV MDA	3340-1	476 (500-1)	3340-1¼ 476 (500-1¼)	NA
CIRCLING	3340-1	471 (500-1)	3460-1½ 591 (600-1½)	NA

MIRL Rwy 5-23 0