

WAAS CH 72643 W34A	APP CRS 345°	Rwy Idg TDZE 79 Apt Elev 79
--	------------------------	---

RNAV (GPS) RWY 34

SHAGELUK (SHX) (PAHX)

RNP APCH.

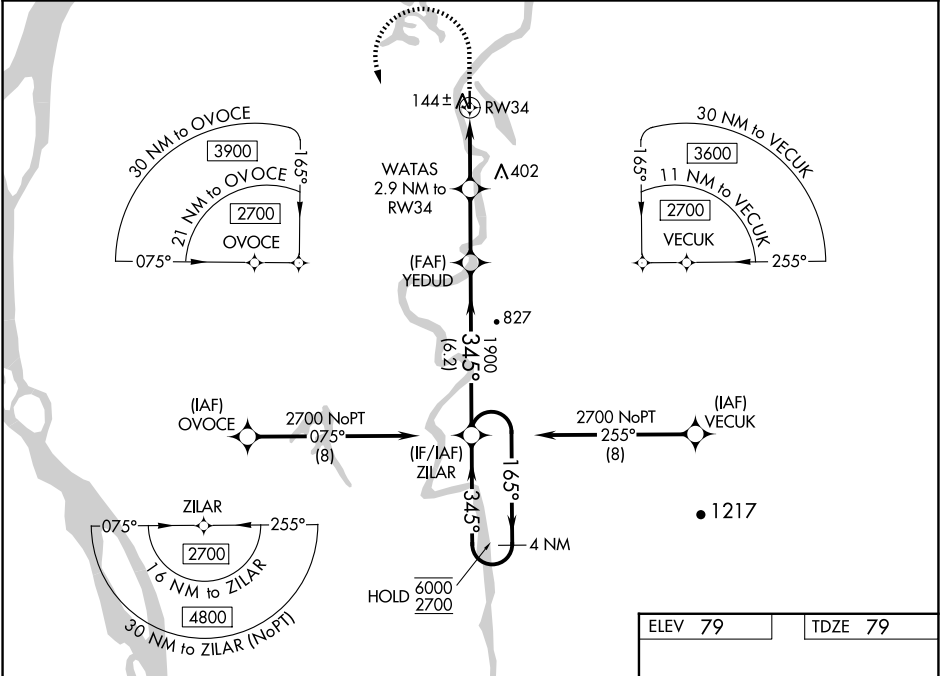
▼

▲

Rwy 34 helicopter visibility reduction below $\frac{3}{4}$ SM NA. For uncompensated Baro-VNAV systems, LNAV/VNAV NA below -18°C or above 54°C. Circling NA for Cats C and D east of Rwy 16-34.

MISSED APPROACH: Climb to 600 then climbing left turn to 2700 direct ZILAR and hold.

AWOS-3P 121.575	ANCHORAGE CENTER 135.7 335.5	KENAI RADIO 122.4	UNICOM 122.8 (CTAF)
---------------------------	--	-----------------------------	-------------------------------



VGSI and RNAV glidepath not coincident (VGSI Angle 3.00/TCH 25).				
<div>4 NM Holding Pattern</div> <div><div>6000</div><div>2700</div><div>GP 3.00°</div><div>TCH 56</div></div> <div>ZILAR</div> <div>YEDUD</div> <div>WATAS</div> <div>RW34</div> <div>*1040</div> <div>6.2 NM</div> <div>2.7 NM</div> <div>2 NM</div> <div>0.9</div>				
CATEGORY	A	B	C	D
LPV DA	329-1 250 (300-1)			
LNAV/VNAV DA	329-1 250 (300-1)			
LNAV MDA	400-1 321 (400-1)			
CIRCLING	460-1 381 (400-1)	540-1 461 (500-1)	540-1½ 461 (500-1½)	800-2¼ 721 (800-2¼)

ELEV 79 TDZE 79

Water Rwy:
18W-36W
5000 X 1000

91

3400 X 75

34

MIRL Rwy 16-34

REIL Rwy 34

345° to RW34

AK, 07 AUG 2025 to 02 OCT 2025

AK, 07 AUG 2025 to 02 OCT 2025