

APP CRS 283°	Rwy Idg TDZE Apt Elev	2932 939 939
------------------------	-----------------------------	---

Rwy Idg	2932
TDZE	939
Apt Elev	939

RNAV (GPS) RWY 28
FALWELL (W24)

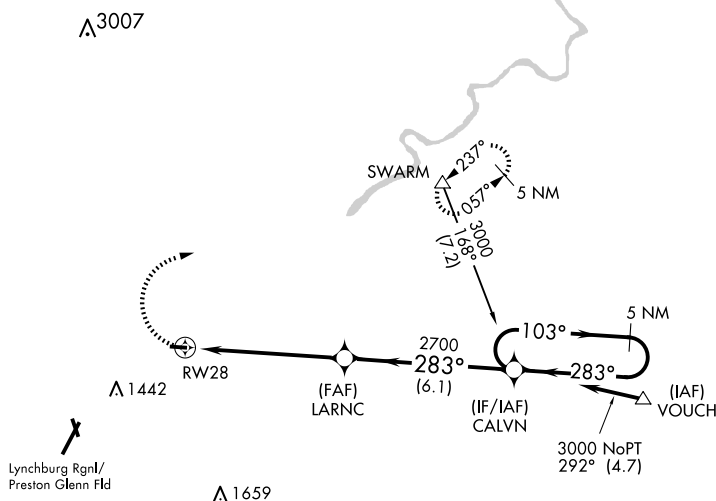
DME/DME RNP-0.3 NA. Use Lynchburg Regional/Preston Glenn Fld altimeter setting, when not received use Farmville altimeter setting and increase all MDA 160 feet. Procedure NA at night.

MISSED APPROACH: Climbing right turn to 3500 direct SWARM and hold.

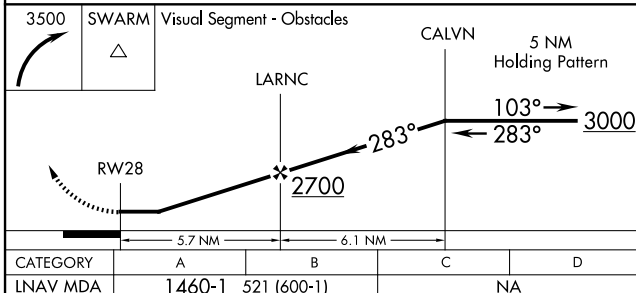
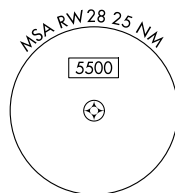
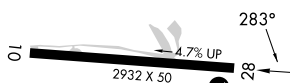
LYH ASOS
119.8

ROANOKE APP CON
135.0 254.325

UNICOM
123.0 (CTAF)



ELEV 939

 TDZE | 939 |

MIRL Rwy 10-28

LYNCHBURG, VIRGINIA
Orig-B 07JAN16

37°23'N-79°07'W

FALWELL (W24)
RNAV (GPS) RWY 28

NE-3, 07 AUG 2025 to 04 SEP 2025