

APP CRS
121°

Rwy Ldg
TDZE
Apt Elev
3214
64
64

RNAV (GPS) RWY 12
GOODEN AIRPARK (RJD)

RNP APCH - GPS.

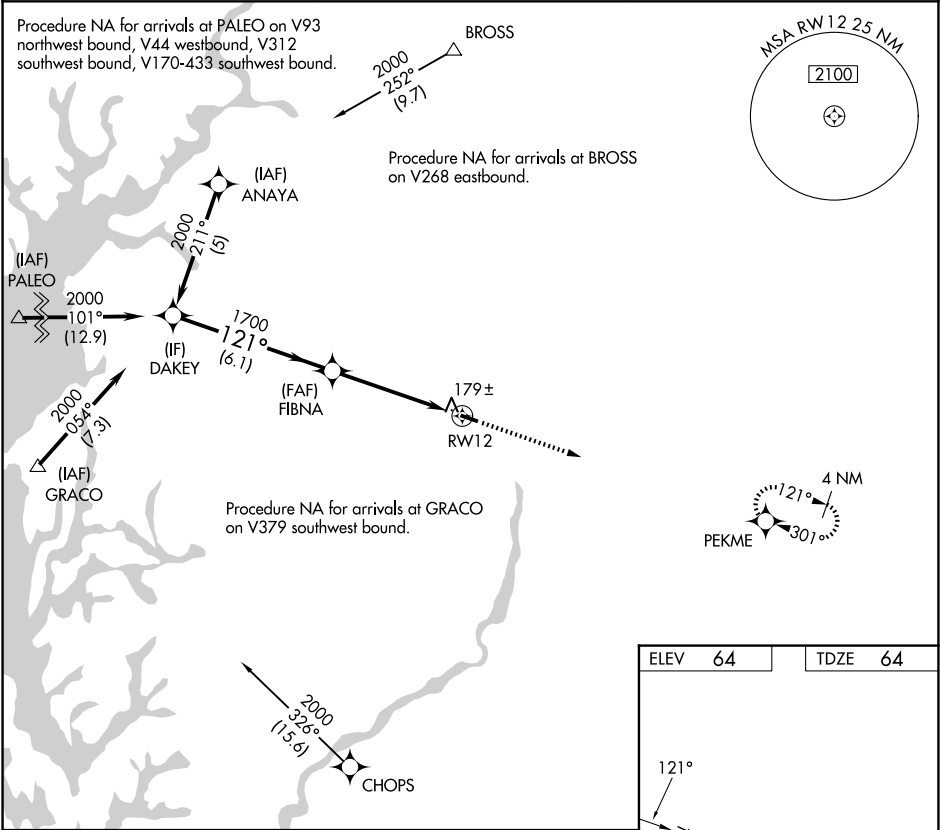
▼

NA

Procedure NA at night. Use Easton altimeter setting: when not received, procedure NA. Rwy 12 helicopter visibility reduction below 1 SM NA.

MISSED APPROACH: Climb to 2000 direct PEKME and hold.

| | | |
|--------------------------------|--|---------------------------------|
| ESN AWOS-3PT 124.475 | POTOMAC APP CON 124.55 317.425 | UNICOM 122.8 (CTAF) 0 |
|--------------------------------|--|---------------------------------|



DAKEY

FIBNA

RW12

2000

1700

3.04°

TCH 40

6.1 NM

5 NM

2000

PEKME

ELEV 64

TDZE 64

121°

3214 X 50

30

| | | | | |
|-----------|-------|-------------|----|---|
| CATEGORY | A | B | C | D |
| LNNAV MDA | 480-1 | 416 (500-1) | NA | |
| CIRCLING | 520-1 | 456 (500-1) | NA | |

LIRL Rwy 12-30 0
REIL Rwy 12 and 30 0