

VORTAC ROD	APP CRS	Rwy Idg	5000
117.5	249°	TDZE	1122
Chan 122		Apt Elev	1122

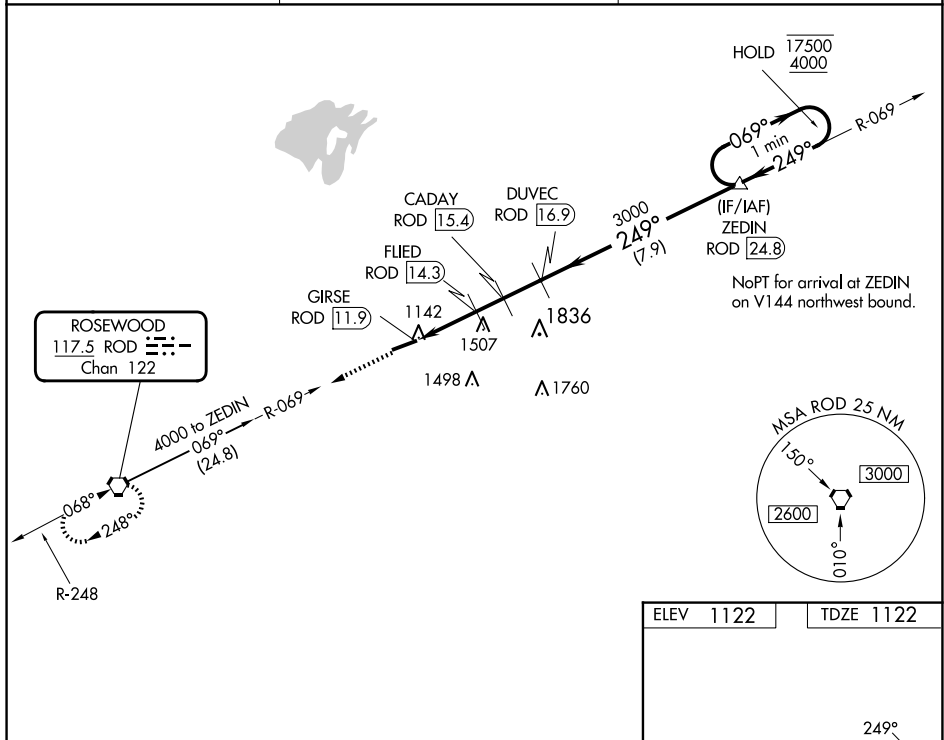
VOR RWY 25
BELLEFONTAINE RGNL (F.D.J.)

DME required.

T Rwy 25 helicopter visibility reduction below $\frac{3}{4}$ SM NA. When local altimeter setting not received, use James M Cox Dayton Intl altimeter setting and increase all MDAs 100 feet, and S-25 visibility Cats C and D $\frac{1}{2}$ SM, and Circling visibility Cats A, C, and D $\frac{1}{4}$ SM. VDP NA when using James M Cox Dayton Intl altimeter setting.

MISSED APPROACH: Climb to 3000
on ROD R-069 to ROD VORTAC
and hold.

AWOS-3 118.075	COLUMBUS APP CON 134.45 294.5	UNICOM 122.8 (CTAF) 0
--------------------------	---	--



3000
↑
ROD
R-069
VGS1 and descent angles not coincident
(VGS1 Angle 4.00/TCH 57).
ZEDIN
One Minute
Holding Pattern
DUVEC ROD 24.8
ROD 16.9
069° → 17500
← 249° 4000
249°
3000
2460
2060
FLIED ROD 14.3
CADA Y ROD 15.4
GIRSE ROD 11.9
3.46°
TCH 41
1.7 NM → 0.8 NM → 1.1 NM → 1.5 NM → 7.9 NM →

CATEGORY	A	B	C	D
S-25	1880-1 758 (800-1)	1880-1¼ 758 (800-1¼)	1880-2	758 (800-2)
CIRCLING	1880-1 758 (800-1)	1880-1¼ 758 (800-1¼)	1880-2¼ 758 (800-2¼)	2000-2¾ 878 (900-2¾)

