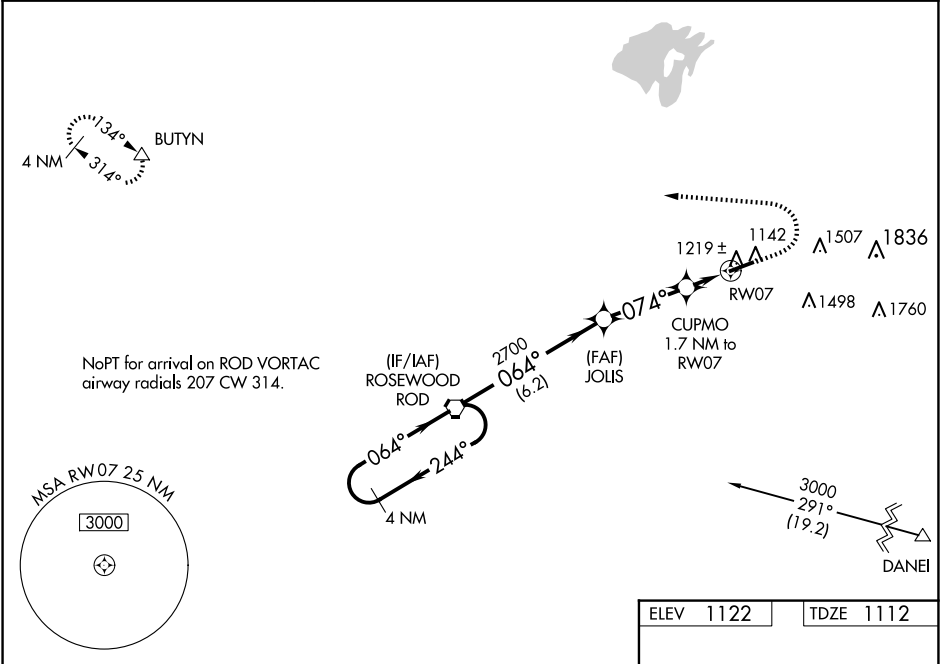


WAAS CH <b>42628</b> <b>W07A</b>	APP CRS <b>074°</b>	Rwy Idg TDZE Apt Elev	<b>5000</b> <b>1112</b> <b>1122</b>
--	------------------------	-----------------------------	---

**RNAV (GPS) RWY 7**  
BELLEFONTAINE RGNL (ED.J)

<b>NA</b>	For uncompensated Baro-VNAV systems, LNAV/VNAV NA below -17°C (2°F) or above 37°C (98°F). DME/DME RNP-0.3 NA. VDP and Baro-VNAV NA with James M. Cox Dayton Intl altimeter setting. When local altimeter setting not received, use James M. Cox Dayton Intl altimeter setting: increase LPV DA to 1456 feet, LNAV/VNAV DA to 1598 feet, and all MDAs 100 feet, and increase LPV and LNAV/VNAV all Cats visibility ¼ SM, LNAV Cats C and D visibility ⅓ SM, and Circling Cat C visibility ½ SM and Cat D visibility ¼ SM.	<b>MISSED APPROACH:</b> Climb to 1600 then climbing left turn to 3000 direct BUTYN and hold.
-----------	--	---

AWOS-3 <b>118.075</b>	COLUMBUS APP CON <b>134.45 294.5</b>	UNICOM <b>122.8 (CTAF) 0</b>
--------------------------	---	---------------------------------



4 NM Holding Pattern		ROD VORTAC	JOLIS	CUPMO	BUTYN
3000		2700	2700	1600	3000
GP 3.00° TCH 41		064°	064°	074°	△
244°		064°	064°	074°	
2700		2700	2700	1600	
6.2 NM		3.2 NM	0.7 NM	1.1 NM	
CATEGORY	A	B	C	D	
LPV DA	1362-⅞		250 (300-⅞)		
LNAV/VNAV DA	1504-1⅜		392 (400-1⅜)		
LNAV MDA	1480-1		368 (400-1)		
CIRCLING	1620-1 498 (500-1)	1640-1 518 (600-1)	1860-2 738 (800-2)	1980-2¾ 858 (900-2¾)	

ELEV 1122	TDZE 1112
MIRL Rwy 7-25 0 REIL Rwy 7 and 25 0	