
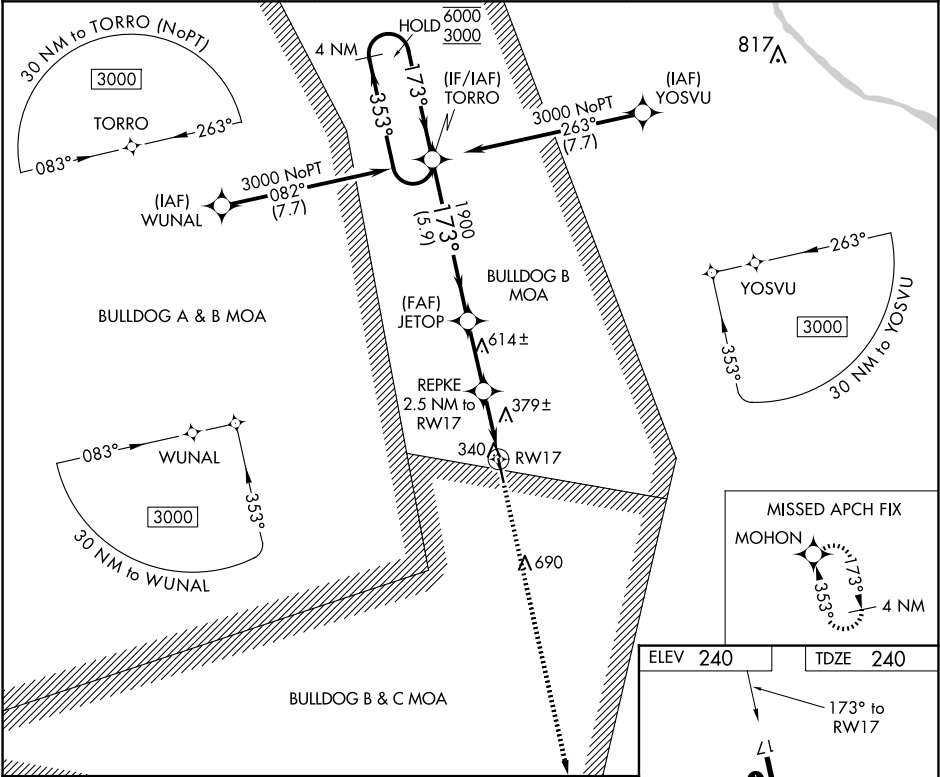


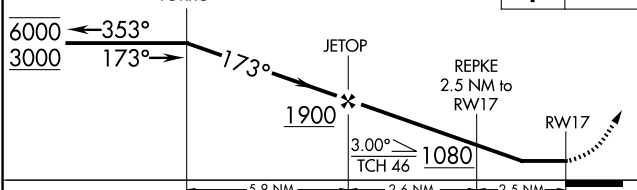
APP CRS	Rwy Idg	5001
173°	TDZE	240
	Apt Elev	240

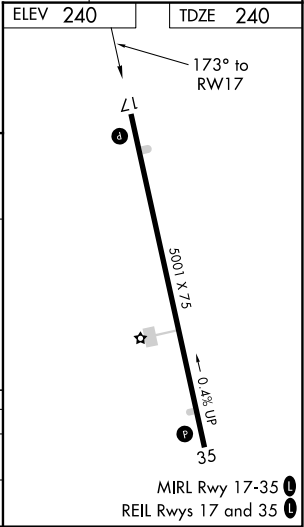
RNAV (GPS) RWY 17  
MILLEN (2J5)

RNP APCH.	MISSED APPROACH: Climb to 3000 direct MOHON and hold.
 Circling NA east of Rwy 17-35. Rwy 17 helicopter visibility reduction below 1 SM NA. Straight-in and Circling Rwy 17 NA at night.	

AWOS-3PT 120.2	AUGUSTA APP CON ★ 126.8 270.3	CTAF 122.9 0
-------------------	----------------------------------	-----------------



VGSI and descent angles not coincident (VGSI Angle 3.00/TCH 29).			
4 NM Holding Pattern TORRO			
			
CATEGORY	A	B	C
LNVA MDA	640-1	400 (400-1)	640-1½
CIRCLING	680-1 440 (500-1)	700-1 460 (500-1)	700-1½ 460 (500-1½)



SE-4, 07 AUG 2025 to 04 SEP 2025

SE-4, 07 AUG 2025 to 04 SEP 2025