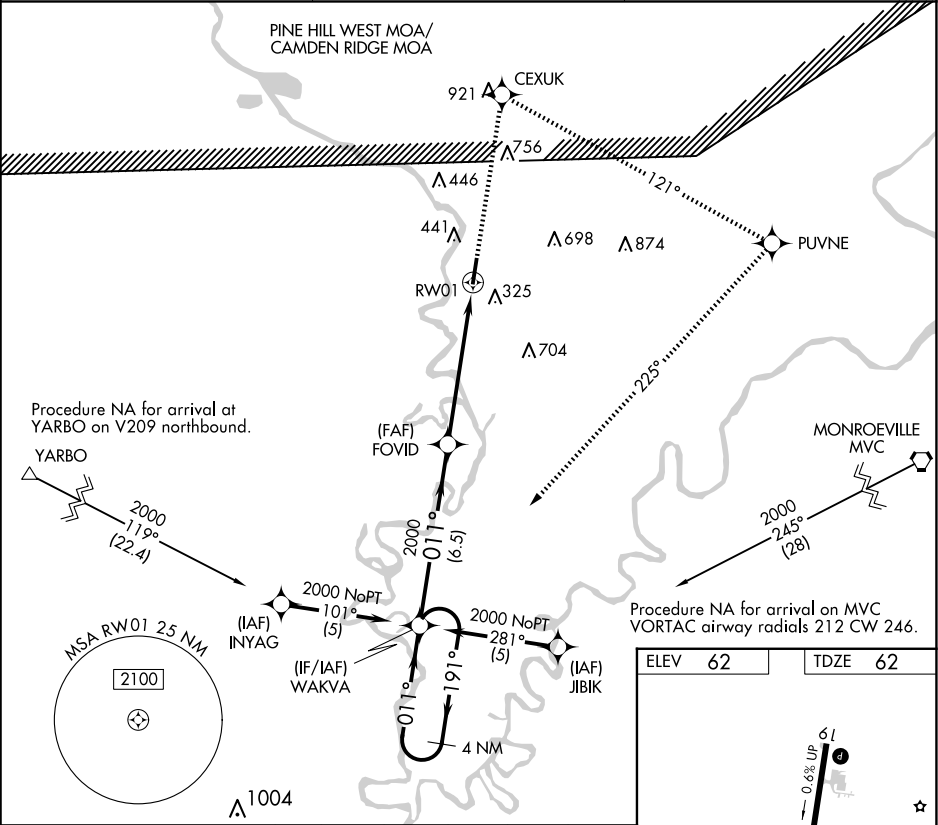


APP CRS	Rwy Idg	5003
011°	TDZE	62
	Apt Elev	62

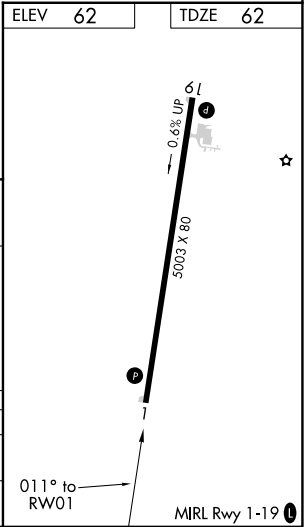
RNAV (GPS) RWY 1  
JACKSON MUNI (4R3)

RNP APCH.	MISSED APPROACH: Climb to 2000 direct CEXUK and right turn on track 121° to PUVNE and right turn on track 225° to WAKVA and hold.
Procedure NA at night. Rwy 1 helicopter visibility reduction below 1 SM NA. Use Evergreen altimeter setting, when not received, use Mobile Rgnl altimeter setting and increase all MDA 20 feet.	

GZH ASOS 133.425	HOUSTON CENTER 127.65 285.475	CTAF 122.90
---------------------	----------------------------------	----------------



Visual Segment - Obstacles.			
4 NM Holding Pattern			
WAKVA			
FOVID			
RW01			
6.5 NM			
5.9 NM			
CATEGORY	A	B	C
LNVA MDA	900-1 838 (900-1)	900-1¼ 838 (900-1¼)	900-2½ 838 (900-2½)
CIRCLING	980-1 ¼ 918 (1000-1¼)	980-2¼ 918 (1000-2¼)	1140-3 1078 (1100-3)



SE-4, 07 AUG 2025 to 04 SEP 2025

SE-4, 07 AUG 2025 to 04 SEP 2025