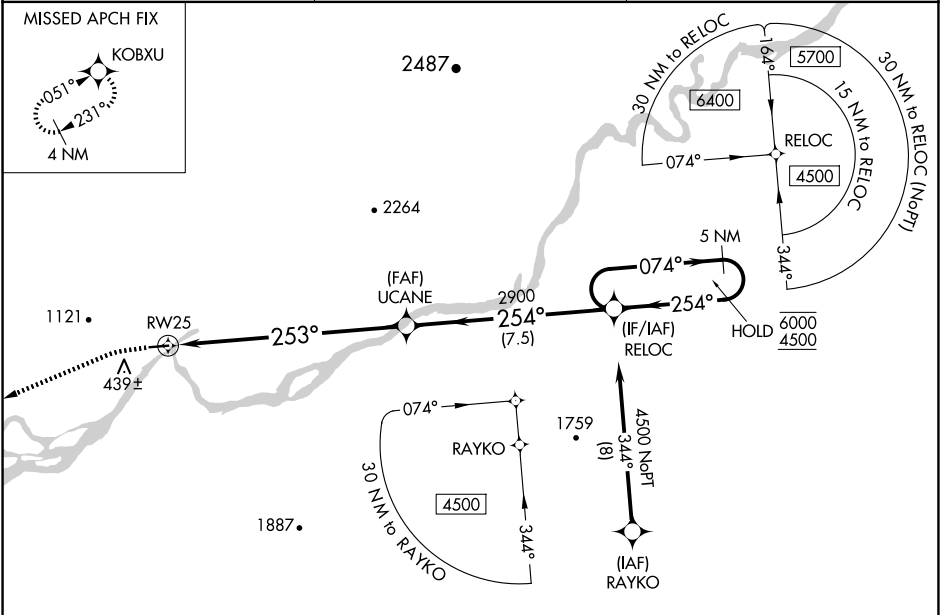


WAAS CH <b>63143</b> <b>W25A</b>	APP CRS <b>253°</b>	Rwy Idg <b>4000</b> TDZE <b>175</b> Apt Elev <b>179</b>
--	------------------------	---

RNAV (GPS) RWY 25  
BOB BAKER MEML (IAN) (PAIK)

RNP APCH-GPS.		MISSED APPROACH: Climb to 900 then climbing left turn to 2900 direct KOBXU and hold. #Missed approach requires minimum climb of 335 feet per NM to 1440.
NA -28°C	Circling NA north of Rwy 7-25. Circling Rwy 7 NA at night. Baro-VNAV NA.	

AWOS-3P <b>119.025</b>	ANCHORAGE CENTER <b>119.2 263.0</b>	CTAF <b>122.70</b>
---------------------------	--	-----------------------



ELEV 179	TDZE 175	1333	900	2900	KOBXU	RELOC	UCANE	5 NM Holding Pattern	6000	4500
		*LNAV only	*4.9 NM to RW25	2900	254°	254°	254°	GP 3.00°	TCH 30	
		4.9 NM	3.7 NM	7.5 NM						
		CATEGORY	A	B	C	D				
		LPV DA#	450-1 275 (300-1)							
		LPV DA	639-1 464 (500-1 3/4)							
		LNAV/VNAV DA	807-1 632 (700-1 3/4)							
		LNAV MDA	1740-1 1/4 1565 (1600-1 1/4)	1740-1 1/2 1565 (1600-1 1/2)	1740-3	1565 (1600-3)				
		CIRCLING	1740-1 1/4 1561 (1600-1 1/4)	1740-1 1/2 1561 (1600-1 1/2)	1740-3	1561 (1600-3)				