

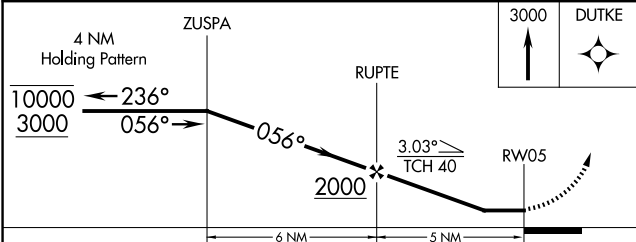
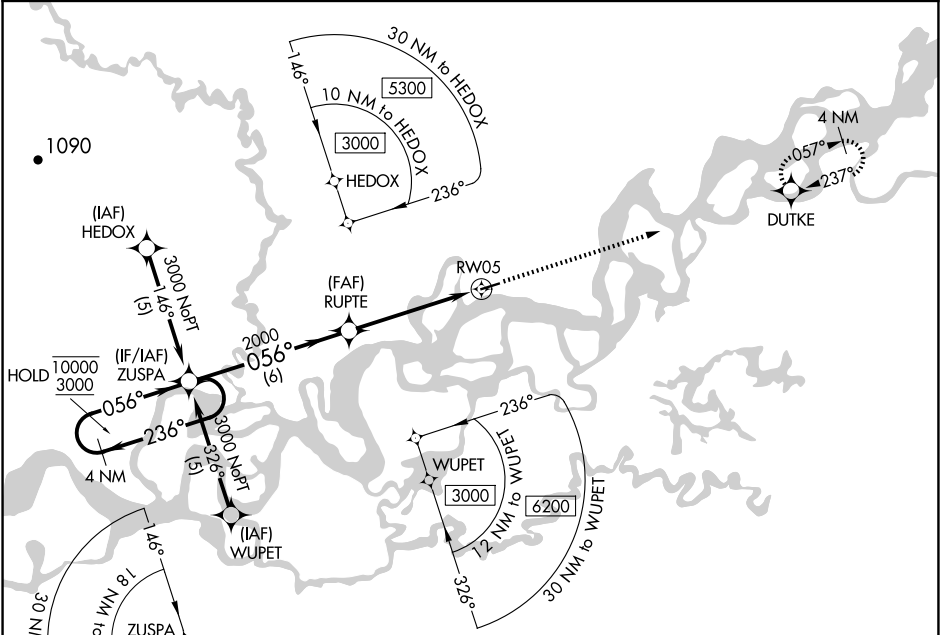
APP CRS	Rwy Ldg	3934
056°	TDZE	365
	Apt Elev	365

RNAV (GPS) RWY 5

BEAVER (WBQ)(PAWB)

RNP APCH-GPS.	MISSED APPROACH: Climb to 3000 direct DUTKE and hold.
▼ Rwy 5 helicopter visibility reduction below ¾ SM NA. ▲ NA Use Fort Yukon altimeter setting.	

FYU/PFYU AWOS-3P 125.8	FAIRBANKS RADIO 122.05 122.15	CTAF 122.9 0
---------------------------	----------------------------------	-----------------



ELEV 365

TDZE 365

MIRL Rwy 5-23 0

CATEGORY	A	B	C	D
LNAV MDA	940-1	575 (600-1)	940-1 3/8 575 (600-1 3/8)	NA
CIRCLING	940-1	575 (600-1)	940-1 1/2 575 (600-1 1/2)	NA

AK, 07 AUG 2025 to 02 OCT 2025

AK, 07 AUG 2025 to 02 OCT 2025