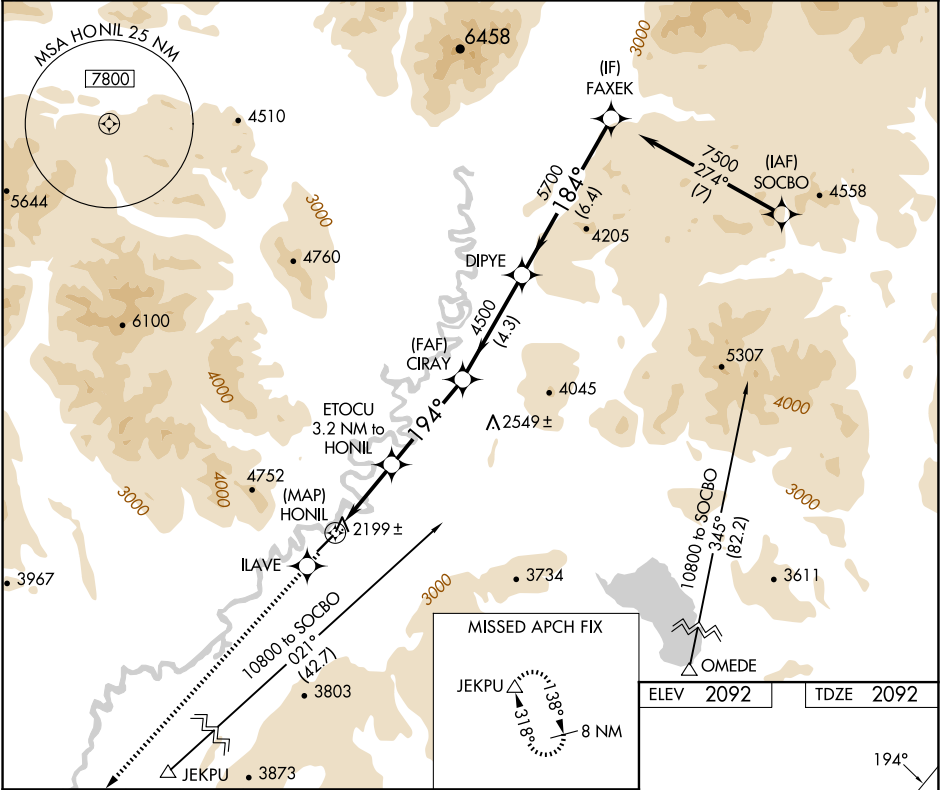


APP CRS 194°	Rwy Idg TDZE Apt Elev 4500 2092 2092
------------------------	--

RNAV (GPS) RWY 20
ARCTIC VILLAGE (ARC)(PARC)

 -37°C	DME/DME RNP-0.3 NA. If local altimeter setting not received, procedure NA.	MISSED APPROACH: Climb to 10000 direct ILAVE and via 196° track to JEKPU and hold, continue climb-in-hold to 10000.
-----------	---	---

AWOS-3P 135.75	ANCHORAGE CENTER 135.0 225.4	FAIRBANKS RADIO 122.05	CTAF 122.9
--------------------------	--	----------------------------------	----------------------



10000 ↑ ILAVE tr 196°	JEKPU △	VGSI and descent angles not coincident (VGSI Angle 3.00/TCH 27).	FAXEK
ETOCU 3.2 NM to HONIL	CIRAY	DIPYE	
1.4 NM to HONIL	3200	4500	7500
0.2 1.4 1.8	4 NM	4.3 NM	6.4 NM
Procedure Turn NA			
CATEGORY	A	B	C
LNAB MDA	2600-1	508 (600-1)	NA
CIRCLING	2700-1 608 (700-1)	2900-1 808 (900-1)	NA

