


WAAS CH <b>63000</b> <b>W30A</b>	APP CRS <b>300°</b>	Rwy Idg <b>3482</b> TDZE <b>5</b> Apt Elev <b>5</b>
--	------------------------	---

RNAV (GPS) RWY 30

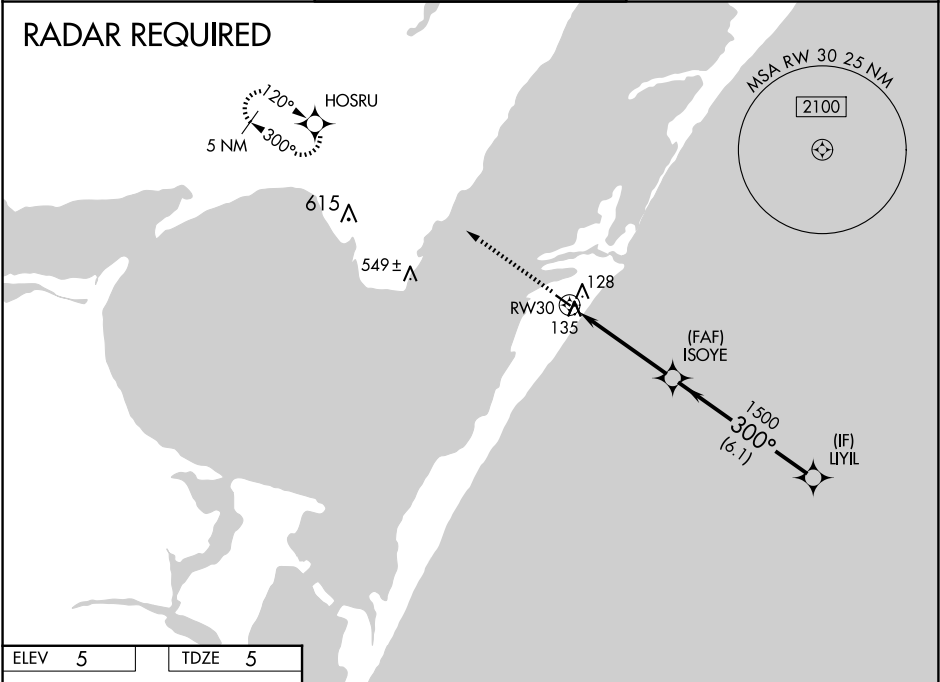
MUSTANG BEACH (R.A.S)




DME/DME RNP-0.3 NA. For uncompensated Baro-VNAV systems, LNAV/VNAV NA below -1.5°C (5°F) or above 44°C (111°F). If local altimeter setting not received, use Corpus Christi Intl altimeter setting and increase all DAs/MDAs 60 feet. Baro-VNAV and VDP NA when using Corpus Christi Intl altimeter setting.


MISSED APPROACH: Climb to 2000 direct HOSRU and hold.

AWOS-3 <b>118.425</b>	CORPUS APP CON <b>125.4 307.9</b>	CTAF <b>122.9</b>
--------------------------	--------------------------------------	----------------------



ELEV 5	TDZE 5
--------	--------





2000 HOSRU

VGSI and RNAV glidepath not coincident (VGSI Angle 3.20/TCH 22).

Procedure Turn NA

\* LNAV only

GP 3.00°  
TCH 35

CATEGORY	A	B	C	D
LPV DA	362-1¼ 357 (400-1¼)		NA	
LNAV/VNAV DA	435-1½ 430 (500-1½)		NA	
LNAV MDA	440-1 435 (500-1)		NA	
CIRCLING	500-1 495 (500-1)		NA	