

WAAS CH 99500 W12A	APP CRS 120°	Rwy Idg 3482 TDZE 5 Apt Elev 5
--	------------------------	---

RNAV (GPS) RWY 12

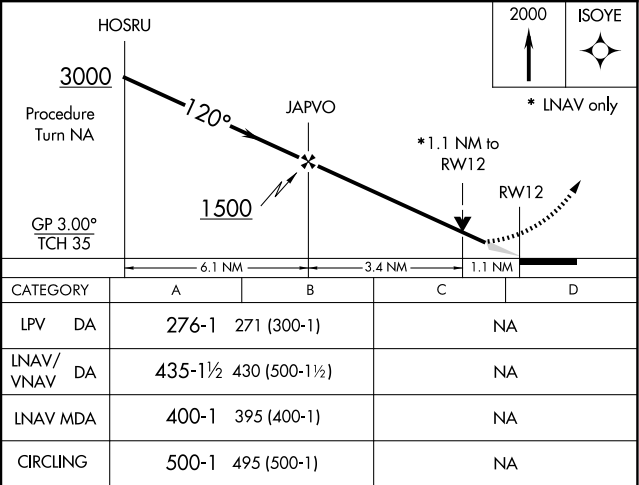
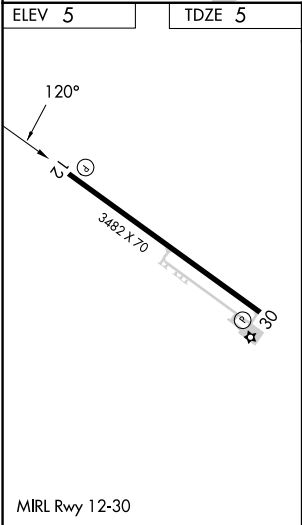
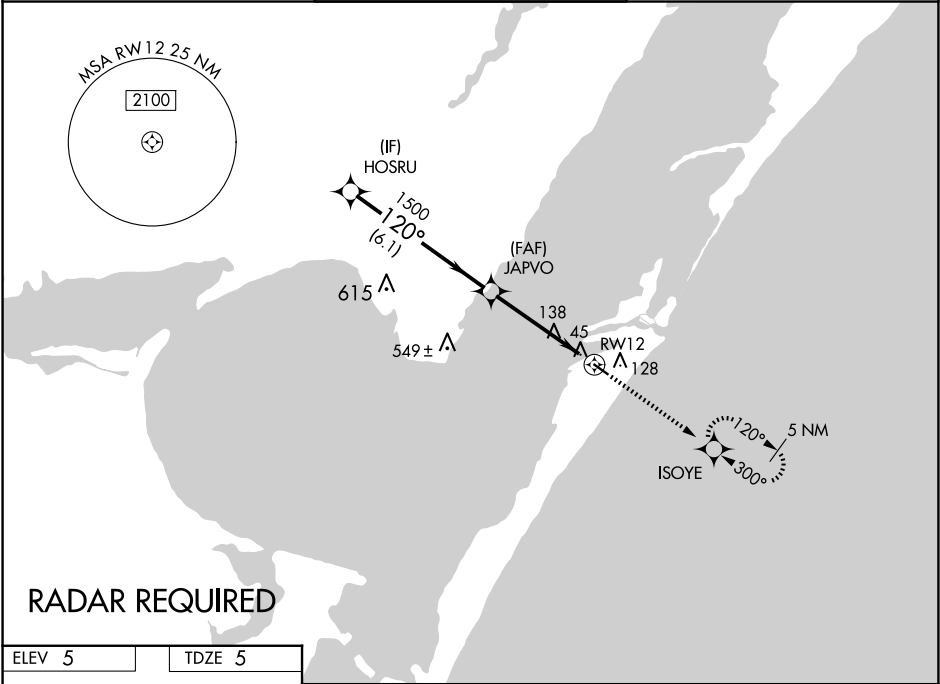
MUSTANG BEACH (R.A.S)

⚠

DME/DME RNP-0.3 NA. For uncompensated Baro-VNAV systems, LNAV/VNAV NA below -15°C (5°F) or above 44°C (111°F). If local altimeter setting not received, use Corpus Christi Intl altimeter setting and increase all DAs/MDAs 60 feet. Baro-VNAV and VDP NA when using Corpus Christi Intl altimeter setting.

MISSED APPROACH: Climb to 2000 direct ISOYE and hold.

AWOS-3 118.425	CORPUS APP CON 125.4 307.9	CTAF 122.9
--------------------------	--------------------------------------	----------------------



SC-3, 07 AUG 2025 to 04 SEP 2025

SC-3, 07 AUG 2025 to 04 SEP 2025