

WAAS CH 82601 W31A	APP CRS 313°	Rwy Ldg 4999 TDZE 18 Apt Elev 18
--	------------------------	---

RNAV (GPS) RWY 31

INGLESIDE RGNL (TFP)

⚠

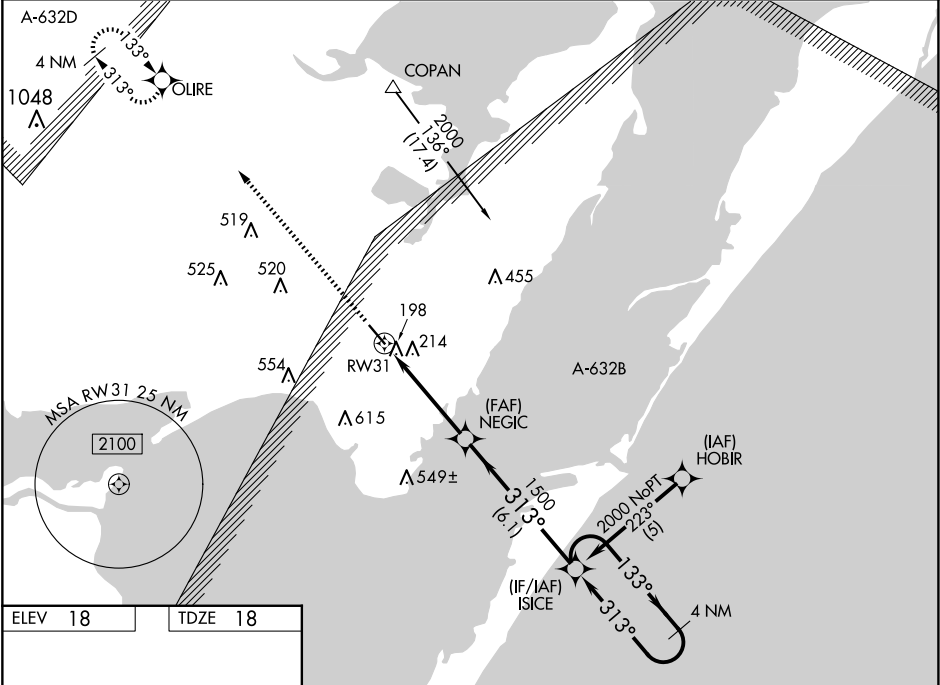
Baro-VNAV NA when using Mustang Beach altimeter setting. For uncompensated Baro-VNAV systems, LNAV/VNAV NA below -15°C (5°F) or above 48°C (118°F).

⚠

When local altimeter setting not received, use Mustang Beach altimeter setting: increase LPV DA to 292 feet; increase LNAV/VNAV DA to 534 feet; increase all MDAs 40 feet, LNAV and Circling visibility Cat C ¼ SM. VDP NA when using Mustang Beach altimeter setting. DME/DME RNP-0.3 NA.

MISSED APPROACH:
Climb to 2100 direct
OLIRE and hold.

AWOS-3 118.775	CORPUS APP CON 120.9 348.725	UNICOM 122.7 (CTAF) 0
--------------------------	--	---------------------------------



ELEV 18	TDZE 18
---------	---------

2100

OLIRE

↑

⬠

VGSI and descent angles not coincident
(VGSI Angle 3.00/TCH 33).

ISICE

4 NM Holding Pattern

133°

133°

2000

GP 3.00°

TCH 40

*LNAV only

*1.3 NM to RW31

RW31

1.3 NM

3.1 NM

6.1 NM

NEGIC

313°

1500

CATEGORY	A	B	C	D
LPV DA	268-1		250 (300-1)	
LNAV/VNAV DA	510-1¾		492 (500-1¾)	
LNAV MDA	480-1	462 (500-1)	480-1¼ 462 (500-1¼)	480-1½ 462 (500-1½)
CIRCLING	520-1	502 (600-1)	860-2½ 842 (900-2½)	980-3 962 (1000-3)

MIRL Rwy 13-31 0
REIL Rwy 13 and 31