

WAAS
CH **78301**
W13A

APP CRS
133°

Rwy Ldg **4999**
TDZE **18**
Apt Elev **18**

RNAV (GPS) RWY 13

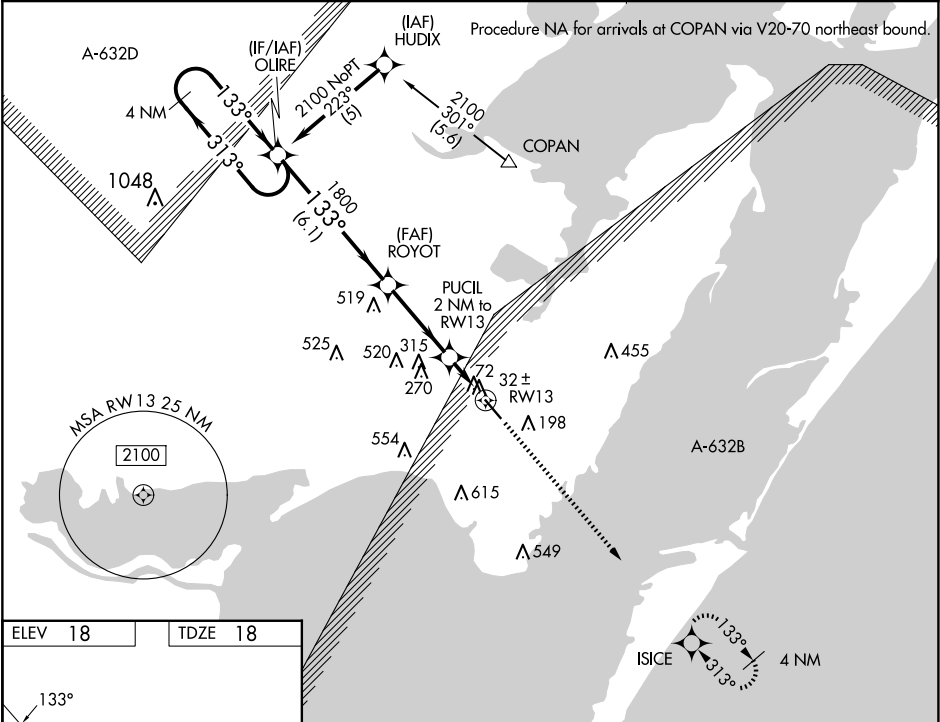
INGLESIDE RGNL (TFP)

RNP APCH-GPS

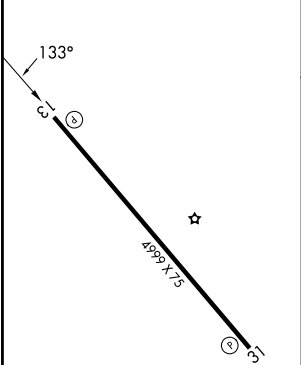
⚠ Baro-VNAV NA when using Mustang Beach altimeter setting. For uncompensated Baro-VNAV systems, LNAV/VNAV NA below -15°C or above 49°C. When local altimeter setting not received, use Mustang Beach altimeter setting: increase LPV DA to 292 feet; increase LNAV/VNAV DA to 310 feet; increase all MDAs 40 feet and Circling visibility Cat C ¼ SM. VDP NA when using Mustang Beach altimeter setting.

MISSED APPROACH:
Climb to 2000 direct ISICE and hold.

AWOS-3 118.775	CORPUS APP CON 120.9 348.725	UNICOM 122.7 (CTAF) 0
--------------------------	--	---------------------------------



ELEV 18	TDZE 18
---------	---------



4 NM Holding Pattern OLIRE

2100

GP 3.00° TCH 40

ROYOT

PUCIL 2 NM to RW13

0.9 NM to RW13

ISICE

2000

CATEGORY	A	B	C	D
LPV DA		268-¾	250 (300-¾)	
LNAV/VNAV DA		286-⅞	268 (300-⅞)	
LNAV MDA		340-1	322 (400-1)	
CIRCLING	520-1	502 (600-1)	860-2½ 842 (900-2½)	980-3 962 (1000-3)

MIRL Rwy 13-31 0
REIL Rwy 13 and 31