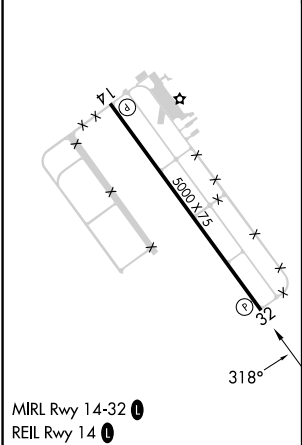
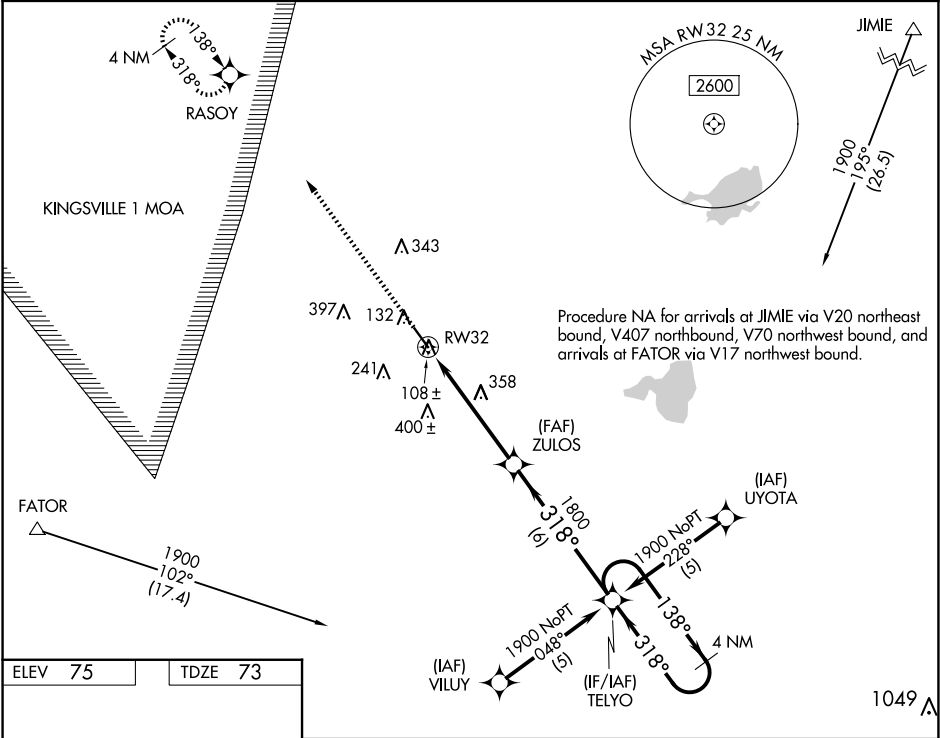



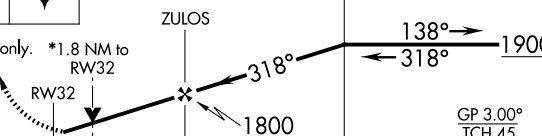
WAAS CH 70701 W32A	APP CRS 318°	Rwy Idg 5000 TDZE 73 Apt Elev 75
--	------------------------	---

RNAV (GPS) RWY 32
SOUTH TEXAS INTL AT EDINBURG (E.BG)

RNP APCH-GPS.	MISSED APPROACH: Climb to 1900 direct RASOY and hold.
Rwy 32 helicopter visibility reduction below 3/4 SM NA. For uncompensated Baro-VNAV systems LNAV/VNAV NA below -15°C or above 48°C.	

AWOS-3PT 118.025	VALLEY APP CON 126.55 377.2	UNICOM 122.8 (CTAF) 0
----------------------------	---------------------------------------	---------------------------------



1900 ↑	RASOY 	VGSI and RNAV glidepath not coincident (VGSI Angle 3.00/TCH 45).			
		4 NM Holding Pattern			
*LNAV only.		*1.8 NM to RW32	ZULOS	TELYO	1900
		GP 3.00° TCH 45			
1.8		3.4 NM	6 NM		
CATEGORY		A	B	C	D
LPV DA	323-3/4 250 (300-3/4)				
LNAV/ VNAV DA	361-1 288 (300-1)				
LNAV MDA	660-1	587 (600-1)	660-1 1/2 587 (600-1 1/2)	660-1 3/4 587 (600-1 3/4)	
CIRCLING	660-1	585 (600-1)	760-2 685 (700-2)	760-2 1/4 685 (700-2 1/4)	