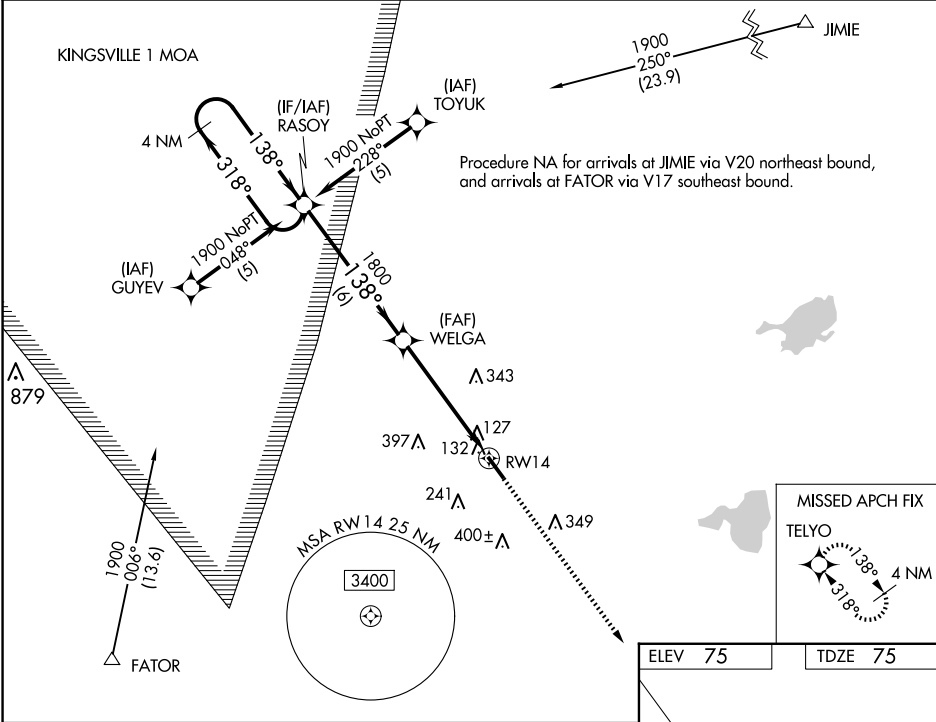


WAAS CH 77901 W14A	APP CRS 138°	Rwy Idg TDZE 75 Apt Elev 75
--	------------------------	---

RNAV (GPS) RWY 14
SOUTH TEXAS INTL AT EDINBURG (EBG)

RNP APCH.	MISSED APPROACH: Climb to 1900 direct TELYO and hold.
-----------	--

AWOS-3PT 118.025	VALLEY APP CON 126.55 377.2	UNICOM 122.8 (CTAF) 0
----------------------------	---------------------------------------	--



4 NM Holding Pattern		VGSI and RNAV glidepath not coincident (VGSI Angle 3.00/TCH 42).		1900	TELYO
1900 ← 318°		RASOY		↑	✧
GP 3.00°		WELGA		RW14	
TCH 45		1800		6 NM	
				5.2 NM	
CATEGORY	A	B	C	D	
LPV DA		325-1	250 (300-1)		
LNAV/VNAV DA		441-1¼	366 (400-1¼)		
LNAV MDA		440-1	365 (400-1)	440-1¼	
				365 (400-1¼)	
CIRCLING	500-1¼	620-1¼	760-2	760-2¼	
	425 (500-1¼)	545 (600-1¼)	685 (700-2)	685 (700-2¼)	

