

WAAS CH 97436 W17A	APP CRS 173°	Rwy Idg 4497 TDZE 1387 Apt Elev 1387
--	------------------------	---

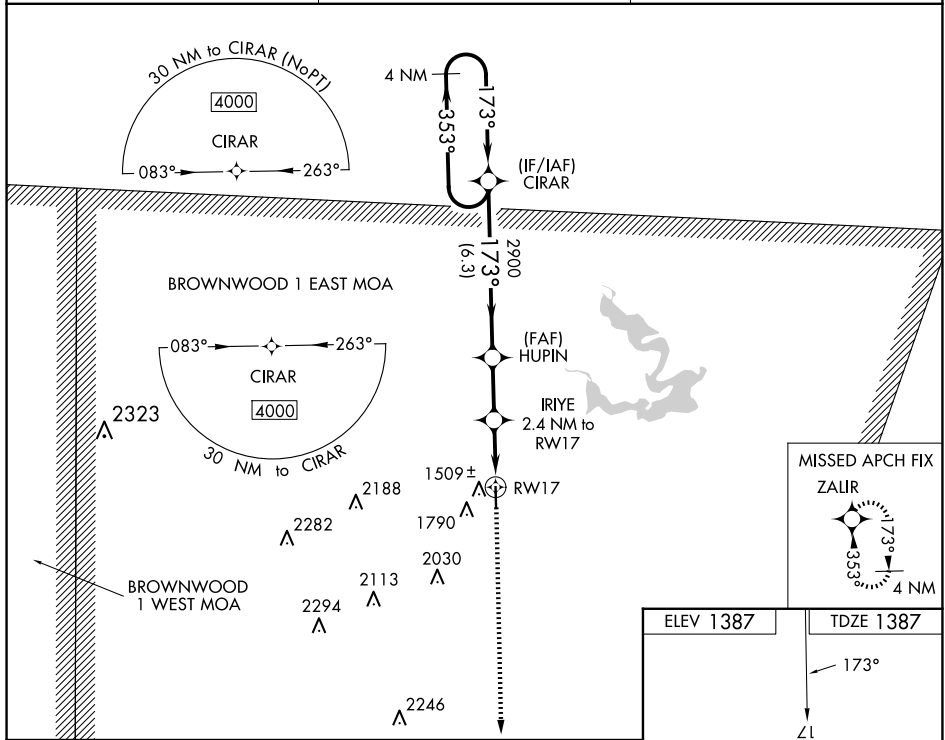
RNAV (GPS) RWY 17
COMANCHE COUNTY-CITY (MKN)

▼ Night landing: Rwy 35 NA. DME/DME RNP-0.3 NA. When local altimeter setting is not received, use Brownwood altimeter setting: increase all DA 46 feet and all MDA 60 feet, increase LNAV/VNAV visibility all Cats ½ mile. Baro-VNAV and VDP NA when using Brownwood altimeter setting. For uncompensated Baro-VNAV systems, LNAV/VNAV NA below -17°C (2°F) or above 54°C (130°F).

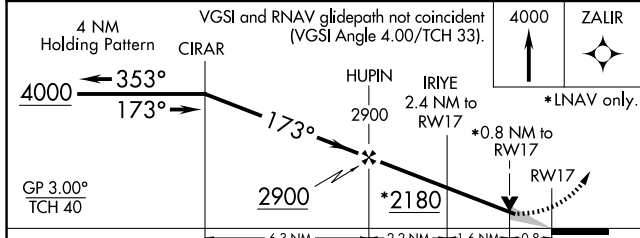
MISSED APPROACH:
Climb to 4000 direct
ZALIR and hold.

AWOS-3
118.575

FORT WORTH CENTER
127.15 314.0

UNICOM
123.075 (CTAF) **L**

SC-3, 07 AUG 2025 to 04 SEP 2025



CATEGORY		A	B	C	D
LPV	DA	1637-1	250 (300-1)		NA
INAV/ VNAV	DA	1686-1	299 (300-1)		NA
	INAV MDA	1760-1	373 (400-1)		NA
C	CIRCLING	2100-1	713 (800-1)		NA

