

WAAS CH 78341 W16A	APP CRS 159°	Rwy Idg 3102 TDZE 541 Apt Elev 541
--	------------------------	---

RNAV (GPS) RWY 16

HOBBY FLD (77S)

RNP APCH.

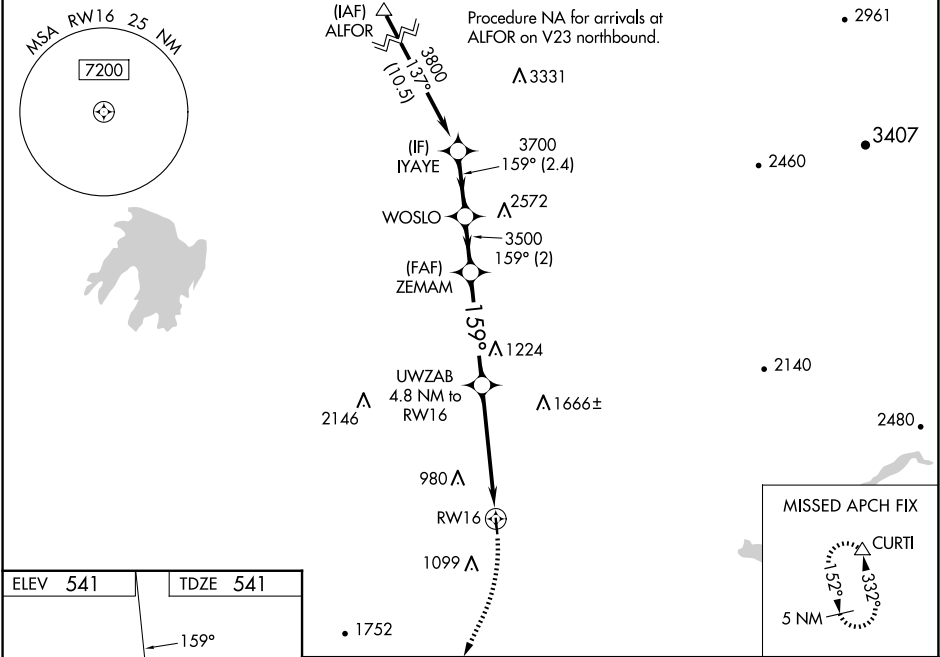
▼

▲NA

For uncompensated Baro-VNAV systems, LNAV/VNAV NA below -16°C or above 54°C. Circling Rwy 34 NA at night. When local altimeter setting not received, use Eugene altimeter setting and increase LPV DA to 1102 feet and all LPV visibilities ¼ SM, and increase LNAV/VNAV DA to 1474; increase all MDAs 80 feet. Baro-VNAV and VDP NA when using Eugene altimeter setting. Rwy 16 helicopter visibility reduction below ¾ SM NA.

MISSED APPROACH: Climbing right turn to 6000 direct CURTI and hold, continue climb-in-hold to 6000.

AWOS-3 119.275	CASCADE APP CON ★ 119.6	UNICOM 122.7 (CTAF) 0
--------------------------	-----------------------------------	---------------------------------



ELEV 541 | TDZE 541

MIRL Rwy 16-34 0
REIL Rws 16 and 34

VGSI and RNAV glidepath not coincident (VGSI Angle 3.60/TCH 26).					6000	CURTI
					* LNAV only.	
IYAYE 3800 159° WOSLO 3700 ZEMAM 3500 UWZAB 4.8 NM to RW16 *4 NM to RW16					RW16	
GP 3.10° TCH 40					*2160	
2.4 NM 2 NM 4.1 NM 0.8 NM 4 NM						
CATEGORY	A		B		C	D
LPV DA	1041-1 ³ / ₈ 500 (500-1 ³ / ₈)					
LNAV/ VNAV DA	1413-2 ¹ / ₂ 872 (900-2 ¹ / ₂)					
LNAV MDA	1820-1 ¹ / ₄ 1279 (1300-1 ¹ / ₄)	1820-1 ¹ / ₂ 1279 (1300-1 ¹ / ₂)	1820-3 1279 (1300-3)			
CIRCLING	1820-1 ¹ / ₄ 1279 (1300-1 ¹ / ₄)	1820-1 ¹ / ₂ 1279 (1300-1 ¹ / ₂)	2260-3 1719 (1800-3)		2740-3 2199 (2200-3)	