

WAAS CH <b>58324</b> <b>W12A</b>	APP CRS <b>138°</b>	Rwy Idg TDZE Apt Elev	<b>6901</b> <b>2022</b> <b>2032</b>
--	------------------------	-----------------------------	---

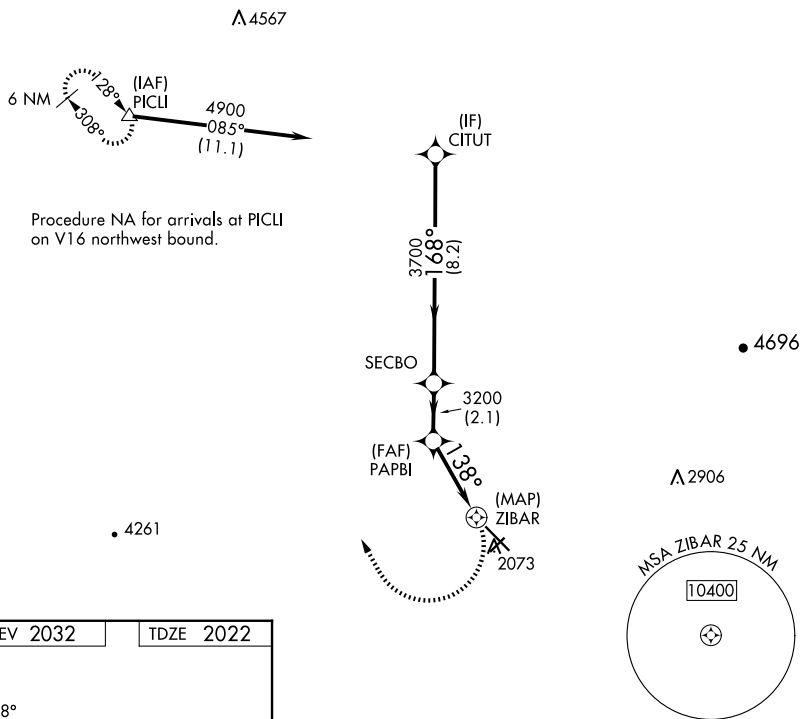
## RNAV (GPS) RWY 12

MARANA RGNL (AVQ)

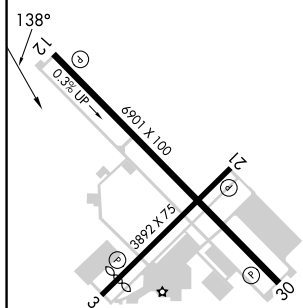
**T** DME/DME RNP-0.3 NA. When local altimeter setting not received, use  
**A**NA Ryan Fld altimeter setting and increase all MDA 100 feet, increase LP  
 and LNAV Cat C visibility  $\frac{1}{4}$  SM and Circling Cat C visibility  $\frac{1}{2}$  SM.

**MISSED APPROACH:** Climbing right turn to 6500 direct PICU and hold, continue climb-in-hold to 6500.

AWOS-3 <b>118.375</b>	TUCSON APP CON <b>119.4 318.1</b>	UNICOM <b>123.0 (CTAF) 0</b>
--------------------------	--------------------------------------	---------------------------------



ELEV 2032		TDZE 2022
-----------	--	-----------



6500	PICU △
------	-----------

CATEGORY	A	B	C	D
LP MDA	2420-1	398 (400-1)	2420-1 $\frac{1}{8}$ 398 (400-1 $\frac{1}{8}$ )	NA
LNAV MDA	2440-1	418 (500-1)	2440-1 $\frac{1}{4}$ 418 (500-1 $\frac{1}{4}$ )	NA
CIRCLING	2440-1 408 (500-1)	2540-1 508 (600-1)	2680-1 $\frac{3}{4}$ 648 (700-1 $\frac{3}{4}$ )	NA

REIL Rwys 3 and 21  
REIL Rwys 12 and 30 **L**  
MIRL Rwys 3-21 and 12-30 **L**

MARANA, ARIZONA

Amdt 1C 09SEP21

32°25'N-111°13'W

MARANA RGNL (AVQ)

RNAV (GPS) RWY 12