

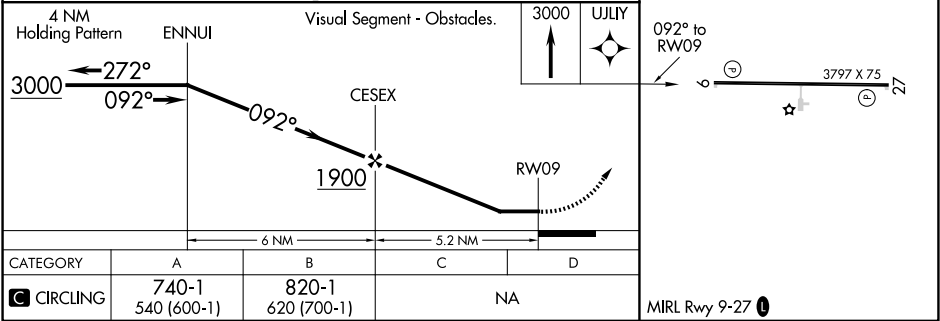
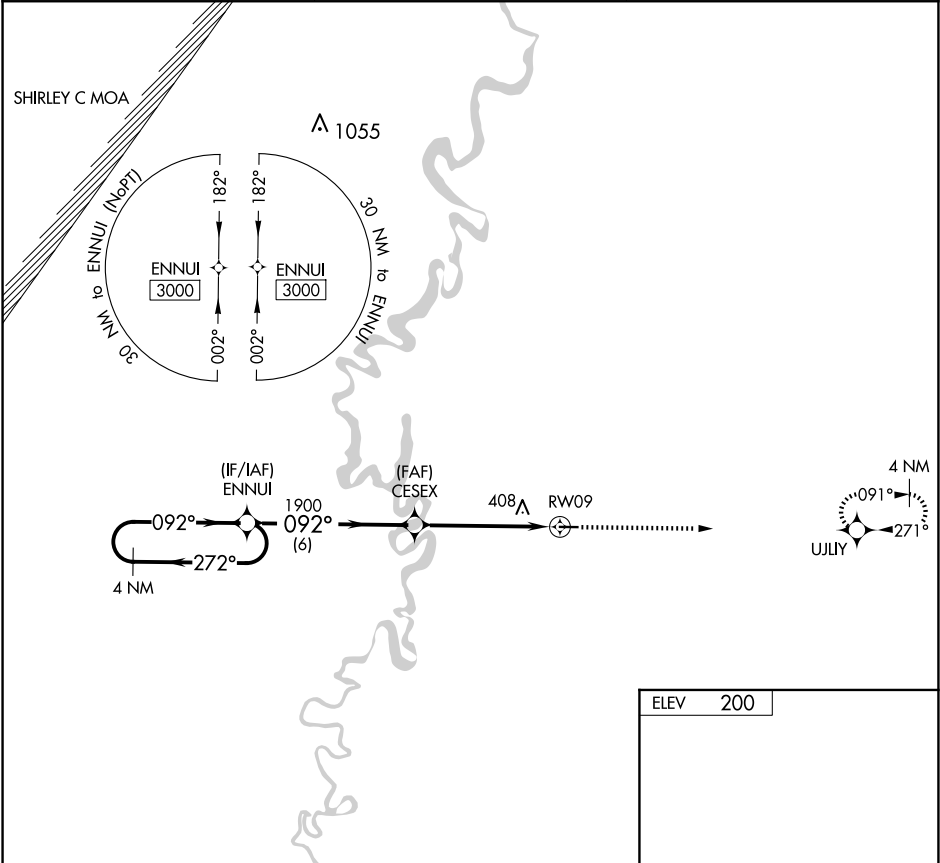
APP CRS	Rwy Idg	N/A
092°	TDZE	N/A
	Apt Elev	200

RNAV (GPS)-A

WOODRUFF COUNTY (M60)

<div><div>▼</div><div>NA</div></div> <div>Rwy 9, 27 helicopter visibility reduction below 1 SM NA. DME/DME RNP-0.3 NA. Procedure NA at night. Use Newport altimeter setting.</div>	<div>MISSED APPROACH: Climb to 3000 direct UJLIY and hold.</div>
--	--

M19 AWOS-3PT 118.15	MEMPHIS CENTER 135.3 335.8	CTAF 122.9 0
------------------------	-------------------------------	-----------------



RNAV (GPS)-A