

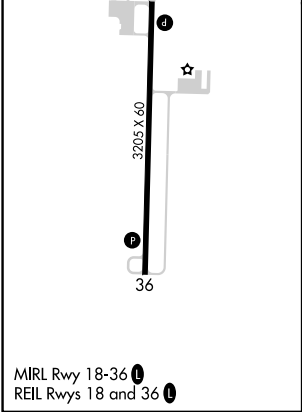
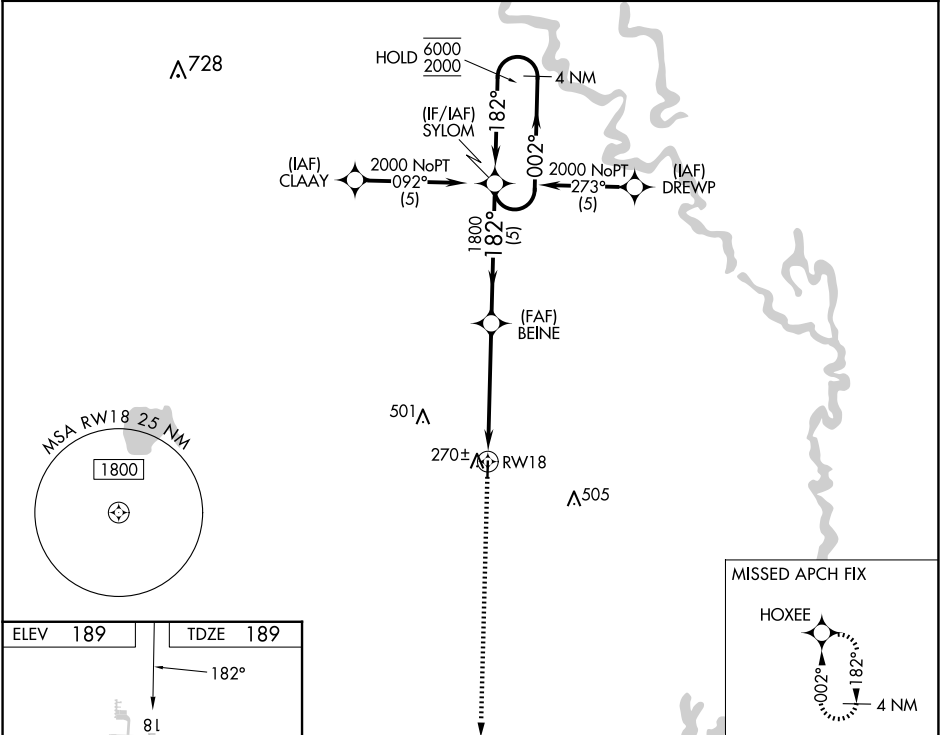
WAAS CH 86344 W18A	APP CRS 182°	Rwy Idg 3205 TDZE 189 Apt Elev 189
--	------------------------	---

RNAV (GPS) RWY 18

DEWITT MUNI/WHITCOMB FLD (5M1)

RNP APCH - GPS.	MISSED APPROACH: Climb to 2000 direct HOXEE and hold.
Rwy 18 helicopter visibility reduction below ¾ SM NA. Baro-VNAV NA. Use Stuttgart altimeter setting; when not received, use Pine Bluff altimeter setting and increase LPV DA to 515 feet, LNAV/VNAV DA to 515 feet, and increase all MDAs 20 feet.	

SGT AWOS-3PT 119.025	MEMPHIS CENTER 135.3 335.8	CTAF 122.9
--------------------------------	--------------------------------------	----------------------



2000	HOXEE	4 NM Holding Pattern			
↑	✦				