

WAAS CH 62838 W05A	APP CRS 051°	Rwy Idg TDZE Apt Elev	4003 954 964
--	------------------------	-----------------------------	---

RNAV (GPS) RWY 5
SEARCY COUNTY (4A5)

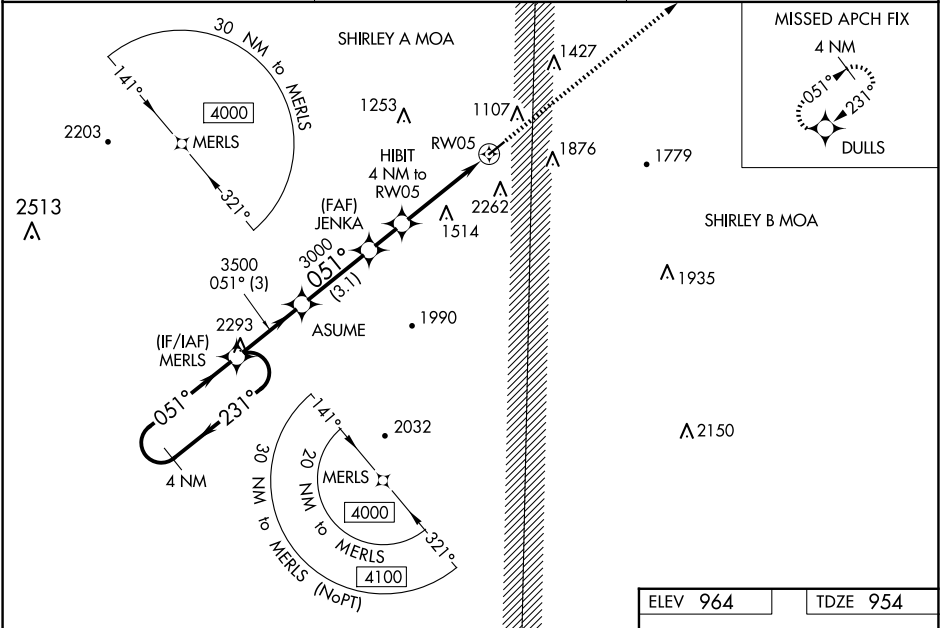
▼

▲ NA

DME/DME RNP-0.3 NA. Circling NA SE of Rwy 5-23. Night Landing: Rwy 23 NA. Baro-VNAV NA. Use Flippin altimeter setting; when not received, use Harrison altimeter setting and increase all Cats LPV DA to 1396 and visibility 1/8 mile, LNAV/VNAV all Cats DA to 1981, and all MDA 60 feet. Helicopter visibility reduction below 3/4 SM NA.

MISSED APPROACH:
Climb to 4000 direct
DULLS and hold.

FLP AWOS-3 132.075	MEMPHIS CENTER 126.85 281.55	CTAF 122.9 0
------------------------------	--	------------------------



VGSI and RNAV glidepath not coincident
(VGSI Angle 3.25/TCH 43).

4000
DULLS

*LNAV only.

4 NM Holding Pattern

GP 3.45°
TCH 56

3000
*2440

3 NM

3.1 NM

1.5 NM

4 NM

CATEGORY	A	B	C	D
LPV DA	1353-1¼	399 (400-1¼)		NA
LNAV/VNAV DA	1938-3	984 (1000-3)		NA
LNAV MDA	1920-1¼ 966 (1000-1¼)	1920-1½ 966 (1000-1½)	1920-3 966 (1000-3)	NA
CIRCLING	1920-1¼ 956 (1000-1¼)	1920-1½ 956 (1000-1½)	1920-3 956 (1000-3)	NA

ELEV 964

TDZE 954

MIRL Rwy 5-23 0
REIL Rwy 5 and 23 0