

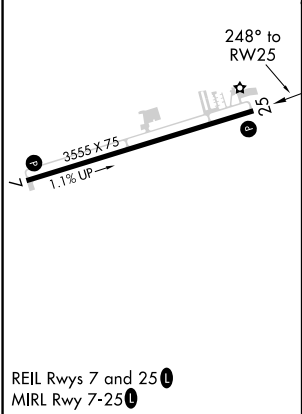
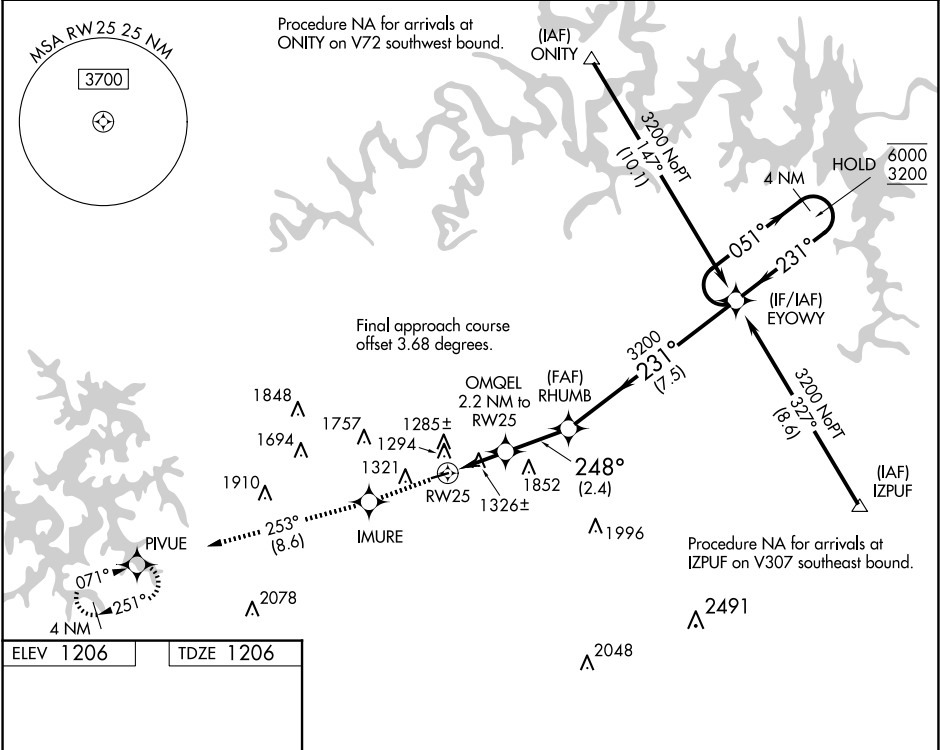
WAAS CH <b>86442</b> <b>W25A</b>	APP CRS <b>248°</b>	Rwy Idg <b>3555</b> TDZE <b>1206</b> Apt Elev <b>1206</b>
--	------------------------	---

RNAV (GPS) RWY 25

CARROLL COUNTY (4M1)

RNP APCH-GPS.	MISSED APPROACH: Climb to 3300 direct IMURE and on track 253° to PIVUE and hold.
<div><div>▼</div><div>NA</div></div> Rwy 25 helicopter visibility reduction below ¾ SM NA. Use Branson altimeter setting; when not received, use Rogers altimeter setting and increase all MDA 20 feet. Circling Rwy 7 NA at night.	

BBG AWOS-3 <b>124.625</b>	RAZORBACK APPROACH★ <b>126.6 305.2</b>	CTAF <b>122.90</b>
------------------------------	---	-----------------------



3300	IMURE	Tr 253°	PIVUE	VGSI and descent angles not coincident (VGSI Angle 3.00/TCH 22).	RHUMB	EYOWY	4 NM Holding Pattern
					OMQEL 2.2 NM to RW25	231°	051°
					2180	3200	6000
					2.2 NM	2.4 NM	7.5 NM
CATEGORY	A	B	C	D			
LP MDA	1660-1	454 (500-1)	NA	NA			
LNAV MDA	1660-1	454 (500-1)	NA	NA			
CIRCLING	1700-1 494 (500-1)	1980-1 774 (800-1)	NA	NA			