

APP CRS  
168°

Rwy Ldg  
TDZE  
Apt Elev

6004  
364  
364

RNAV (GPS) RWY 17  
MOUNT PLEASANT RGNL (OSA)

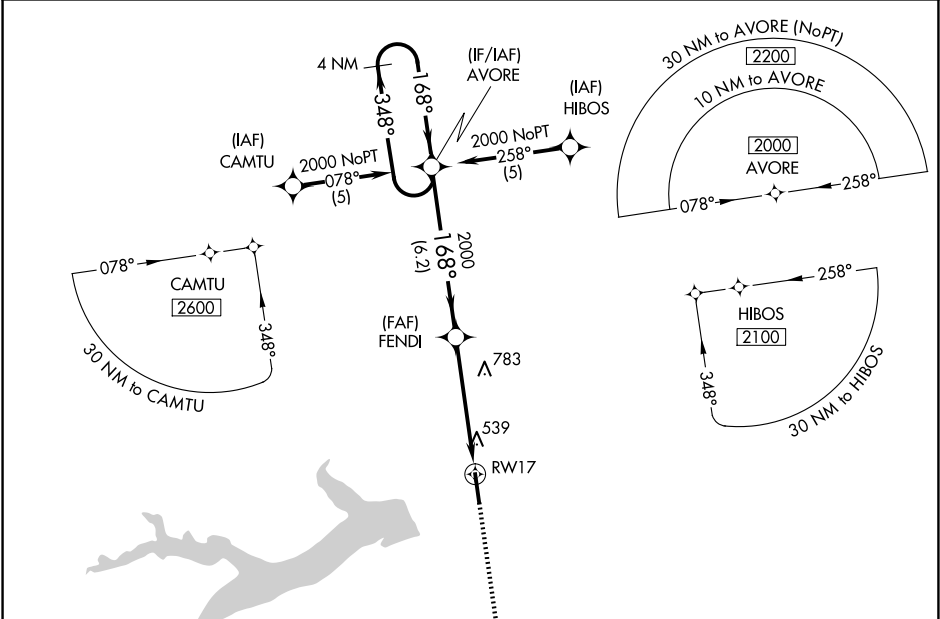
▼

▲

For uncompensated Baro-VNAV systems, LNAV/VNAV NA below -15°C (5°F) or above 48°C (118°F). DME/DME RNP-0.3 NA. When local altimeter setting not received, use Paris altimeter setting and increase all DA/MDA 120 feet, increase LNAV/VNAV visibilities ¼ mile all Cats, LNAV visibilities ½ mile all Cats, and circling visibilities ½ mile all Cats. VDP and Baro-VNAV NA when using Paris altimeter setting.

MISSED APPROACH: Climb to 2100 direct JAVOT and hold.

AWOS-3 119.775	FORT WORTH CENTER 132.025 317.75	UNICOM 122.7 (CTAF) 0
-------------------	-------------------------------------	--------------------------



MISSED APCH FIX  
JAVOT

4 NM Holding Pattern

4 NM Holding Pattern

AVORE

FENDI

RWY 17

JAVOT

2100

JAVOT

GP 3.00°  
TCH 39

6.2 NM

2.8 NM

2.2

CATEGORY	A	B	C	D
LNAV/VNAV DA	890-2 526 (600-2)			
LNAV MDA	1100-1 736 (800-1)	1100-2 736 (800-2)	1100-2 736 (800-2)	1100-2 736 (800-2)
CIRCLING	1100-1 736 (800-1)	1100-2 736 (800-2)	1100-2 736 (800-2)	1100-2 736 (800-2)

ELEV 364

TDZE 364

168°

6004 X 100

0.4% UP

35

REIL Rwy 17 and 35 0

MIRL Rwy 17-35 0