

WAAS CH 97316 W19A	APP CRS 193°	Rwy Ldg TDZE Apt Elev	6000 488 488
----------------------------------------	------------------------	-----------------------------	-----------------------------------------

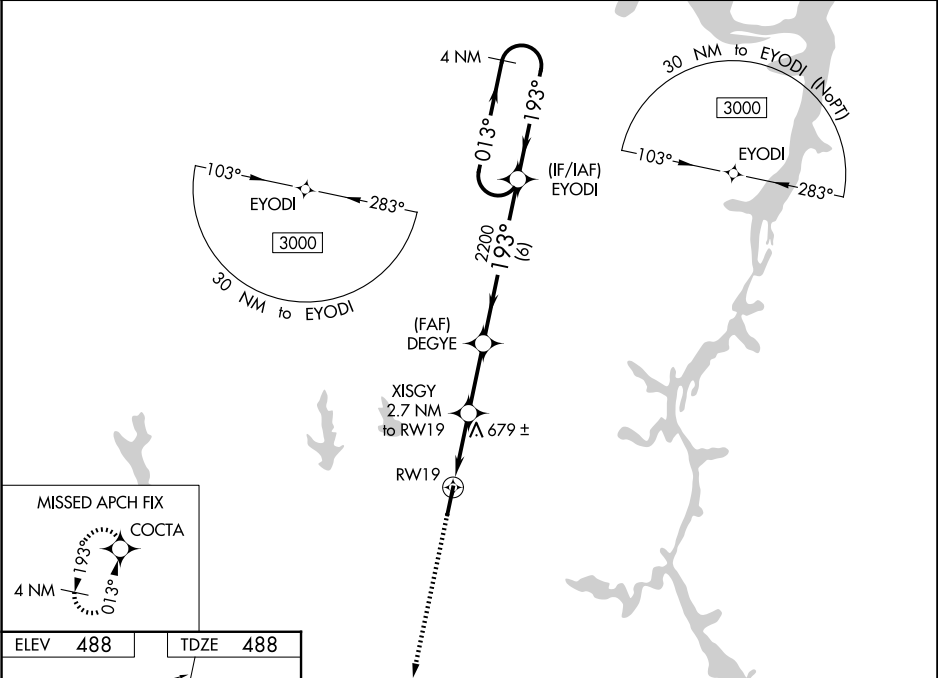
RNAV (GPS) RWY 19

BEECH RIVER RGNL (PVE)

⚠ For uncompensated Baro-VNAV systems, LNAV/VNAV NA below -15°C (5 °F) or above 54 °C (130°F).
DME/DME RNP-0.3 NA. When local altimeter setting not received, use Jackson altimeter setting: increase LPV all Cats DA to 828 and all Cats visibility ¼ mile; increase LNAV/VNAV all Cats DA to 890 and all Cats visibility ⅓ mile; increase all MDA 100 feet and LNAV Cats C/D and Circling Cat C visibility ¼ mile and Circling Cat D visibility ½ mile. VDP and Baro-VNAV NA when using Jackson altimeter setting.

MISSED APPROACH:
Climb to 3000 direct
COCTA and hold.

AWOS-3 118.125	MEMPHIS CENTER 125.85 379.25	UNICOM 123.0 (CTAF) 0
--------------------------	----------------------------------------	---------------------------------



ELEV 488	TDZE 488
-----------------	-----------------

