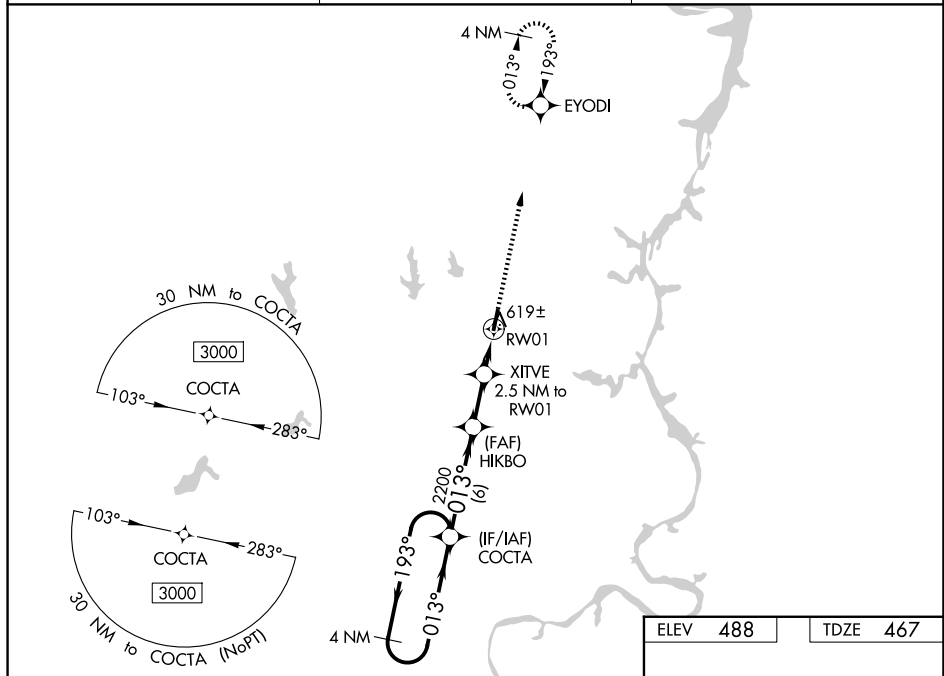


RNAV (GPS) RWY 1  
BEECH RIVER RGNL (PVE)

**MISSED APPROACH:**  
Climb to 3000 direct  
EYODI and hold.

AWOS-3 <b>118,125</b>	MEMPHIS CENTER <b>125.85 379.25</b>	UNICOM <b>123.0 (CTAF) ①</b>
--------------------------	--	---------------------------------



4 NM Holding Pattern

COCTA

HIKBO

XITVE 2.5 NM to RW01

GP 3.00° TCH 40

193°

013°

2200

\* 1280

\* 1.2 NM to RW01

RW01

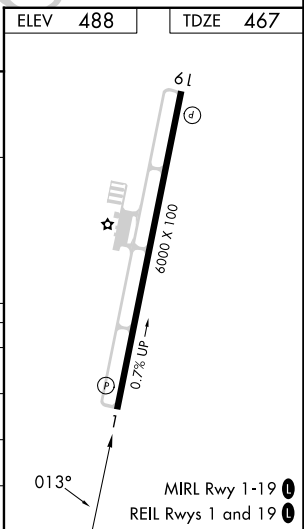
VGS and RNAV glidepath not coincident (VGS Angle 3.09°/TCH 37°)

3000

EYODI

\* LNAV only

CATEGORY	A	B	C	D
LPV DA	717-7/8		250 (300-7/8)	
LNAV/VNAV DA	821-1 1/4		354 (400-1 1/4)	
LNAV MDA	880-1 413 (400-1)		880-1 1/8 413 (400-1 1/8)	
CIRCLING	940-1 452 (500-1)	980-1 492 (500-1)	1000-1 1/2 512 (600-1 1/2)	1200-2 1/4 712 (800-2 1/4)



SE-1, 07 AUG 2025 to 04 SEP 2025