

ST IGNACE, MICHIGAN

AL-10180 (FAA)

22223

APP CRS	Rwy Idg	3800
074°	TDZE	624
	Apt Elev	624

RNAV (GPS) RWY 7

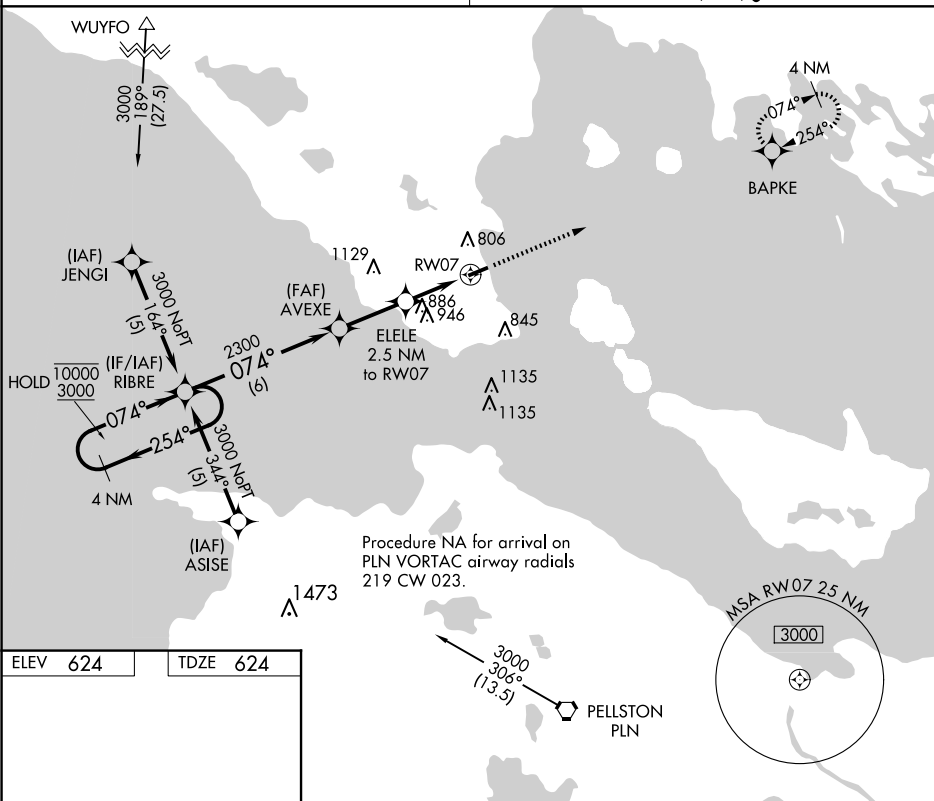
MACKINAC COUNTY (83D)

RNP APCH.

T	Straight-in Rwy 07 NA at night, Circling Rwy 07 NA at night.
A NA	Rwy 07 helicopter visibility reduction below 1 SM NA. Circling NA at night south of Rwy 07-25.

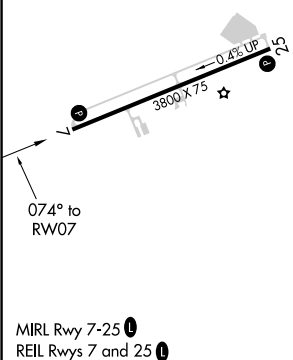
MISSED APPROACH: Climb to 3000
direct BAPKE and hold.

MINNEAPOLIS CENTER		
134.6	354.05	

UNICOM
122.7 (CTAF) **L**

ELEV	624		TDZE	624
------	-----	--	------	-----

TDZE 624



MIRL Rwy 7-25 **L**
REIL Rwy 7 and 25 **L**

4 NM Holding Pattern

RIBRE

Visual Segment - Obstacles.

3000

BAPKE

10000 ← 254°

3000 → 074°

074°

AVEXE

ELELE
2.5 NM to RW07

2300

1460

RW07

6 NM

2.6 NM

2.5 NM

CATEGORY	A	B	C	D
LNAV MDA	1200-1	576 (600-1)	1200-1½ 576 (600-1½)	NA
CIRCLING	1260-1	636 (700-1)	1300-2 676 (700-2)	NA

ST IGNACE, MICHIGAN
Orig-C 11AUG22

45°53'N-84°44'W

MACKINAC COUNTY (83D)
RNAV (GPS) RWY 7

EC-1, 07 AUG 2025 to 04 SEP 2025

EC-1, 07 AUG 2025 to 04 SEP 2025