

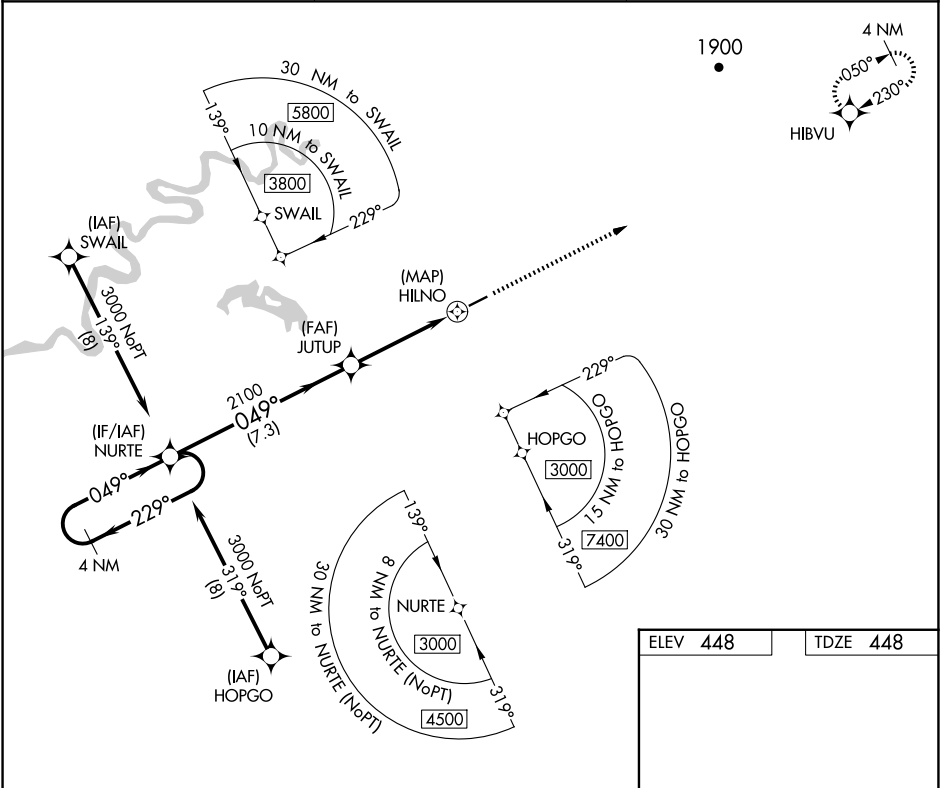
APP CRS	Rwy Idg	4001
049°	TDZE	448
	Apt Elev	448

RNAV (GPS) RWY 5

NIKOLAI (FSP)(PAFS)

RNP APCH.	MISSED APPROACH: Climb to 5000 direct HIBVU and hold, continue climb-in-hold to 5000.
<div><div></div><div>Rwy 5 helicopter visibility reduction below ¾ SM NA.</div></div>	

AWOS-3P 118.325	ANCHORAGE CENTER 128.1 353.8	CTAF 122.8
--------------------	---------------------------------	---------------



4 NM Holding Pattern		VGSI and descent angles not coincident (VGSI Angle 3.20/TCH 26).		5000	HIBVU
3000		NURTE			
229°		049°			
		JUTUP			
		3.20° TCH 40			
		2100			
		0.8 NM to HILNO			
		HILNO			
		7.3 NM			
		3.5 NM			
		0.8			
		0.5			
CATEGORY	A	B	C	D	
LNAV MDA	900-1	452 (500-1)	900-1 3/8	452 (500-1 3/8)	
CIRCLING	900-1	452 (500-1)	900-1 1/2	1000-2	
			452 (500-1 1/2)	552 (600-2)	

