

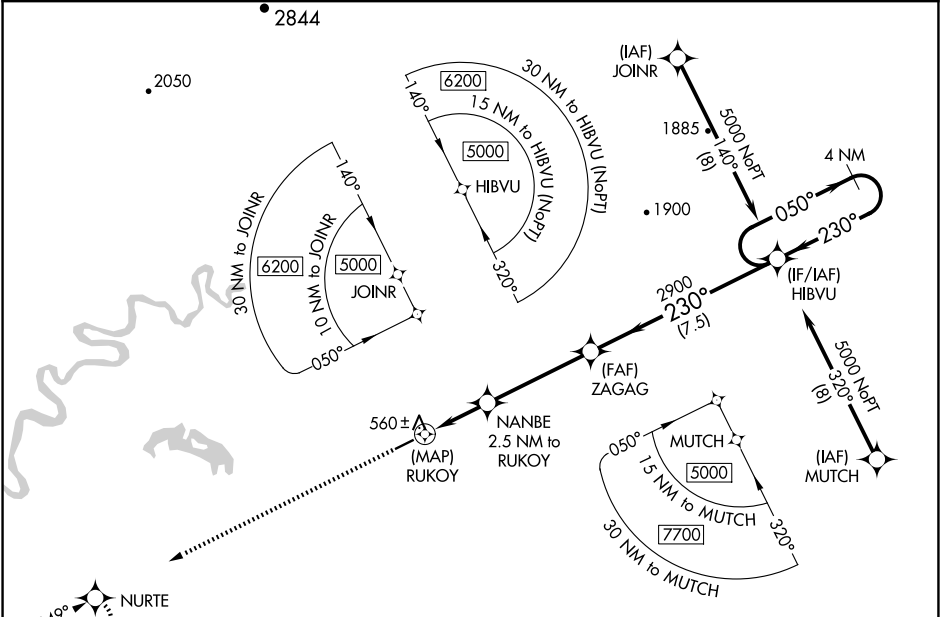
APP CRS	Rwy Idg	4001
230°	TDZE	448
	Apt Elev	448

RNAV (GPS) RWY 23

NIKOLAI (F'SP)(PAFS)

RNP APCH.	MISSED APPROACH: Climb to 3000 direct NURTE and hold.
<div>Rwy 23 helicopter visibility reduction below ¾ SM NA.</div>	

AWOS-3P 118.325	ANCHORAGE CENTER 128.1 353.8	CTAF 122.8
--------------------	---------------------------------	---------------



047

229°

4 NM

3000

NURTE

↑

✦

VGSI and descent angles not coincident
(VGSI Angle 3.20/TCH 28).

NANBE

2.5 NM to RUKOY

0.5 NM to RUKOY

0.5

2 NM

4.1 NM

7.5 NM

3.20°

TCH 40

2900

1500

ZAGAG

HIBVU

4 NM Holding Pattern

050°

230°

5000

CATEGORY	A	B	C	D
LNAV MDA	820-1 372 (400-1)			
CIRCLING	860-1 412 (500-1)	900-1 452 (500-1)	900-1½ 452 (500-1½)	1000-2 552 (600-2)

ELEV 448

TDZE 448

230°

4001 X 75

23

5

✦

✦

MIRL Rwy 5-23

REIL Rwy 5 and 23