

WAAS  
CH **97743**  
**W33A**

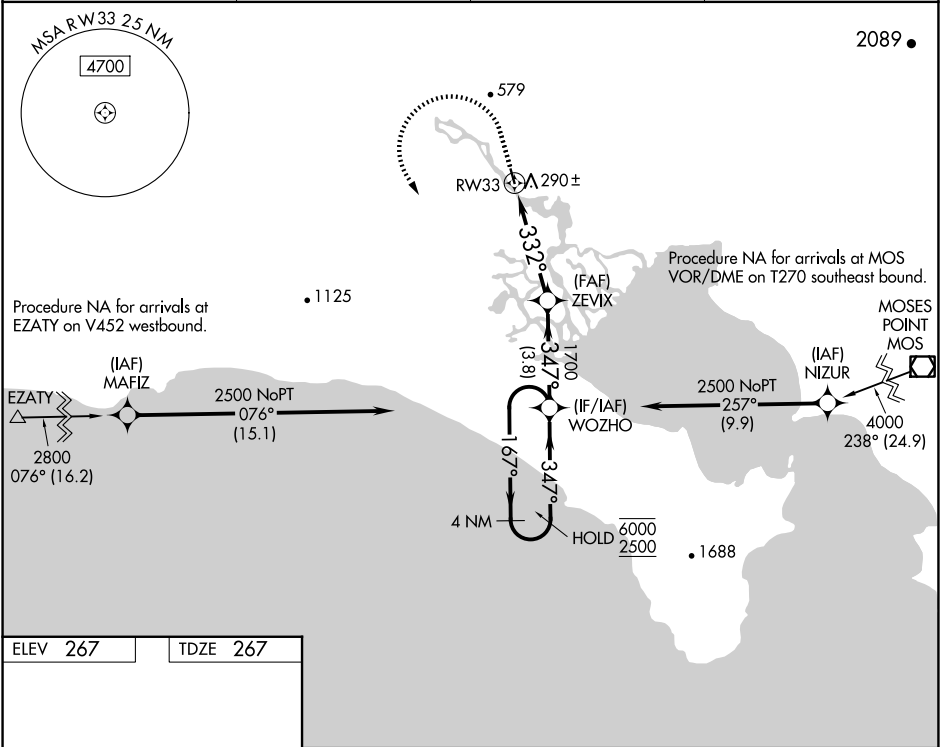
APP CRS  
**332°**

Rwy Idg **3000**  
TDZE **267**  
Apt Elev **267**

**RNAV (GPS) RWY 33**

WHITE MOUNTAIN (WMO) (P A W M)

RNP APCH.		MISSED APPROACH: Climb to 1100 then climbing left turn to 2500 direct WOZHO and hold.	
Circling NA northeast of Rwy 15-33.			
AWOS-3P <b>121.45</b>	ANCHORAGE CENTER <b>133.3 290.4</b>	NOME RADIO <b>122.05</b>	CTAF <b>122.9 0</b>



1100	2500	WOZHO	WOZHO 4 NM Holding Pattern	
*LNAV only	*0.9 NM to RW33	ZEVIK 1700	167° → 6000	← 347° 2500
RW33		332°	347°	1700
-0.9		3.5 NM	3.8 NM	GP 3.00° TCH 40
CATEGORY	A	B	C	D
LPV DA	517-1 250 (300-1)			NA
LNAV MDA	600-1 333 (400-1)			NA
CIRCLING	620-1 353 (400-1)	720-1 453 (500-1)	1080-2½ 813 (900-2½)	NA